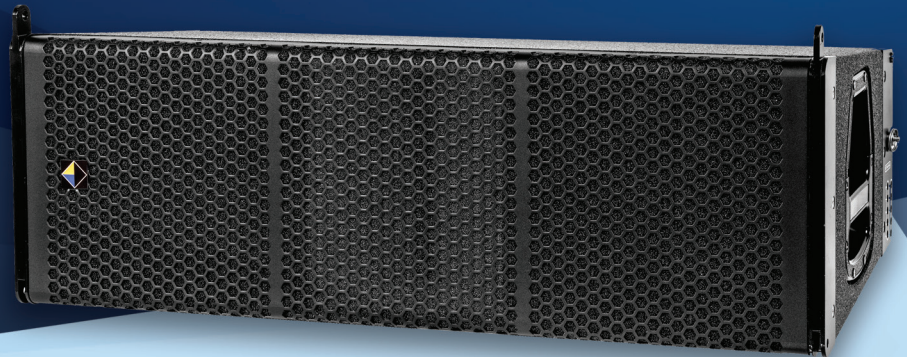


## VERTICAL SERIES • ME20V

### High-performance line-array system with 100° horizontal dispersion

- Custom components.
- High SPL output (141 dB peak at 1 metre).
- Bi-amplified cabinet (2 active ways, 3 real ways) with 2 x 10" and 3.5" + 1.75" coaxial driver. Passive filter with high phase coherence; crafted with premium electronic components.
- HEPC® (High-End Phase Coherence) filter technology.
- Design based on low-curvature flat wavefront.
- Cabinet with 100° horizontal dispersion.
- Tilt can be adjusted in 9 steps from 0° to 9°.
- Digital laser inclinometer kit for installation in rigging bumper (optional).
- Made with 18-ply Finnish birch wood.
- Finished with a special waterproof polyurea coating resistant to erosion and degradation.
- Robust construction in panels assembled with tongue-and-groove techniques and subsequently glued and pressed.
- Front grid with hexagonal punching and high-resistance epoxy finish.
- Special acoustic foam coating for protection of the loudspeakers against dust and dirt.
- Maga Engineering® limited 5-year warranty.





## TECHNICAL SPECIFICATIONS

Frequency response:	50 Hz - 20 KHz
Bass/treble sensitivity (1 W at 1 metre):	100 dB / 112 dB
Admissible power (continuous) for bass:	1400 W AES, 16 $\Omega$
Admissible power (continuous) for mid-treble:	230 W AES, 16 $\Omega$
Recommended amplification:	1600 W
Rated impedance:	16 $\Omega$
Maximum SPL:	141 dB peak at 1 metre
Coverage angle (-6 dB):	H orizontal: 100° / Vertical: defined by the array (min. 20°)
Bass components:	2 x 10" neodymium, 700 W AES each
Treble components:	1 x 3.5" + 1 x 1.75" neodymium, 150 W + 80 W AES

### CABINET DIMENSIONS

Front:	866 x 278 mm
Rear:	419 mm
Net weight:	33 kg
Connections:	2 x Neutrik® 4-pole speakON®; +1-1 bass / +2-2 mid-treble connection



## DIMENSIONS

