

MAGA
ENGINEERING
PRODUCT CATALOGUE



 **MADE AND
DESIGNED
IN SPAIN**

Graphic design and layout

Central Media 
Agencia de Comunicación
www.centralmedia.com.es

**© Maga Engineering®
Product Catalogue
Revision September 2024**

INDEX

INTRODUCTION	Pág. 04
ABOUT US	Pág. 06
VERTICAL SERIES	Pág. 08
SUB SERIES	Pág. 18
WEDGE SERIES	Pág. 36
HORIZON SERIES	Pág. 44
SPOT SERIES	Pág. 46
BROADCAST SERIES	Pág. 54
AMPLIFICATION	Pág. 56



INTRODUCTION

Welcome to the Maga Engineering® product catalogue. Below you will find the features and technical specifications of our current product range classified according to the following series:

VERTICAL Series

With the data and technical characteristics of our **ME10V**, **ME10V Wide** and **ME20V** line array cabinets (which are included in the **EASE Focus® version 3** prediction and rigging program) and the new compact line-array passive column **ME46V MKII**.

SUB Series

Dedicated to our **ME115SNDA MKII**, **ME115SND**, **ME115SNDX**, **ME218SNDX**, **ME218LEX**, **ME218FHA** and **ME218FH** subwoofers. The **ME218LEX** subwoofer is included in the **EASE Focus® version 3** prediction and rigging software.

WEDGE Series

With the high-performance floor monitors **ME12WAX**, **ME12WX**, **ME15WAX** and **ME15WX**.

HORIZON Series

With the data and technical characteristics of the high-performance cabinet for point-source or horizontal curvilinear array **ME12Z**.

SPOT Series

Dedicated to the point-source PA and monitor applications cabinets **ME8SA MKII**, **ME8S**, **ME12SA** and **ME12S**).

BROADCAST Series

With the **ME10BA** monitor, specifically designed for mixing and audiovisual post-production studios.

AMPLIFICATION

With our new **ME 5K** (5 000 W), **ME 10K** (10 000 W) and **ME 20K** (20 000 W) amplifiers, specifically designed to amplify our ME10V and ME20V line-array systems, Maga Mini systems and permanent installations.

Our range of products completely covers the needs of the most demanding companies and professionals in the sector. Whatever your project, whatever your concerns, do not hesitate to consult our specialised staff, as you are sure to find a satisfactory solution to your needs in Maga Engineering® sound systems.

All our line-array cabinets (**ME10V**, **ME10V Wide** and **ME20V**) as well as our **ME218LEX** subwoofer are included in **EASE Focus® version 3** prediction and rigging software.

Another proof of our commitment to quality and a job well done is the availability of a laser inclinometer (optional) on the rigging frame of our line-array systems, not to mention aspects such as the **5-year limited warranty on all passive Maga Engineering® products**.

Finally, before entering the products section, you will find a text called “About us”, where you can see our company origins and philosophy. Although, really, everything could be summarized in a few words: Quality, Performance, Reliability and Confidence. All at the service of our greatest passions, which are SOUND and MUSIC.

We hope you enjoy reading.

MAGA ENGINEERING



ABOUT US

Maga Engineering® is a company dedicated to the design and manufacture of high-end acoustic cabinets and PA systems in Spain. Our goal is clear and well defined: to produce professional audio systems of the highest performance with unbeatable value for money.

We strongly believe that it is possible to offer premium sound systems at honest prices, without charging excessive mark-ups or incurring in enormous marketing costs. When you invest in a Maga Engineering system, you are betting on a high-level electroacoustic engineering product forged with the most advanced components available.

All our acoustic cabinets are designed from the initial sketch with the aim of offering the best results allowed by state-of-the-art technologies. At Maga Engineering, we only use the best drivers and components in the market. We carry out thousands of laboratory tests to thoroughly evaluate performance, sound pressure and tone quality. Electronics, enclosures, transducers... all parts are carefully assessed so that the whole system works perfectly.

The Maga Engineering® systems are extremely versatile and offer real high-fidelity quality. All our passive filters are crafted with premium electronic components.

The line-array cabinets of our **VERTICAL Series (ME10V, ME10V Wide and ME20V)** allow for multiple configurations. The **ME10V** line-array element can be stacked or rigged with extreme ease of operation. It is indeed a highly profitable option for equipment rental companies: with its remarkable flexibility for installation, it can be used to set up all kinds of small- and medium-format events with a single acoustic cabinet model. Despite its extraordinarily small size and light weight (**24 kg**), it is able to achieve an astounding sound pressure level of **137 dB peak at 1 metre**. This reduction in weight and space offers a significant advantage in terms of transport and largely simplifies the rigging and assembly process. This cabinet is available in two versions: the **ME10V**, with **90°** horizontal dispersion, and the **ME10V Wide**, with **120°** horizontal dispersion.

The **ME20V** line-array element has been specially designed to cover medium- and large-format events. This unit is a 3-way cabinet reduced to 2 ways by means of a high-performance passive filter. It includes two 10" drivers and a 3.5" + 1.75" coaxial driver that guarantees perfect alignment and phase coherence. With a very tight size and light weight (**33 kg**), it is as manageable and versatile as its younger sibling, and reaches a formidable sound pressure level of **141 dB peak at 1 metre** without compromising our trademark timbral quality.

All our line-array cabinets are included in the EASE Focus® version 3 prediction and rigging software.

The combination of the **VERTICAL Series** cabinets with the **SUB Series ME218LEX** subwoofer (dual 18"), which attains **140 dB peak at 1 metre**, allows for line-array configurations of any size from small applications to massive systems for the most imposing big touring events. For more information, please see our **Line-array configurations** document

The ME218LEX subwoofer is included in the EASE Focus® version 3 prediction and rigging software.

The **VERTICAL Series** also offers the new compact line-array passive column **ME46V MKII**, whose performance (**137 dB peak at 1 metre**) and sound quality are **so exceptional that may be comparable to the standards of the hi-fi world**. The cabinet has 4 x 6.5" and 3 x 1" drivers, and is reduced to 1 way through a custom passive filter.

The wide range of Maga Engineering products includes four high-performance floor monitors in the **WEDGE Series (ME12WAX, ME12WX, ME15WAX and ME15WX)**, several acoustic cabinets for point-source PA and monitor applications in the **SPOT Series (ME8SA MKII, ME8S, ME12SA and ME12S)** and a high-performance cabinet for point-source or horizontal curvilinear array in the **HORIZON Series (ME12Z)**. We also offer the high-performance sets **ME12Z/ME218FH** (passive) and **ME12Z/**

ME218FHA (powered), ideal for **DJ/CLUB** applications thanks to their spectacular sound pressure levels (**134 dB peak** for the **ME12Z** and **139 dB peak** for the **ME218FH** and **ME218FHA** subwoofers).

The **SPOT Series** models (**ME8SA MKII, ME8S, ME12SA** and **ME12S**) deliver a level of performance and quality that stands out as absolutely phenomenal for their small size. Complemented with the 15" (**ME115SNDA MKII, ME115SND, ME115SNDX**) and 18" (**ME118SNDA, ME118SND**) subwoofers in our **SUB Series**, these **SPOT** cabinets work as perfect mini-PA solutions for situations where a traditional line-array system is not necessary, always preserving the pristine sound and high-fidelity timbre that define us. For more details, please take a look at the **Maga Mini configurations** document.

Last but not least, our new **BROADCAST Series** includes the **ME10BA** monitor, specifically designed for mixing and audiovisual post-production studios.

Maga Engineering is backed by a team of electronic and acoustic engineers with great command of all the technologies that have historically been used in the manufacture of acoustic cabinets and PA systems. But, beyond that, they are also music lovers who have always disagreed with the notion that large format audio systems will inevitably sound "hard" or "harsh". Our engineers have developed the acoustic cabinets presented on the Maga Engineering catalogue and website with the strong belief that a PA system may offer sound clarity levels similar to those in the hi-fi scene, without sacrificing maximum performance and ensuring the best industry specifications. All our products are the result of countless hours of study, experience and laboratory tests to distil the highest possible quality in every case. And, of course, all this happens without ever losing sight of the practical handling and operational features that make life easier for rental and event production companies, which ultimately are the users of our systems.

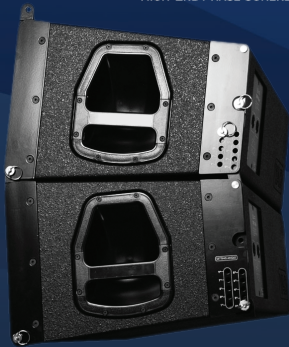


VERTICAL SERIES • ME10V

Compact line-array system with 90° horizontal dispersion

- Custom components.
- Symmetrical L/R design guarantees acoustic symmetry.
- 2-way cabinet (1 x 10", 2 x 0.8" drivers). Passive filter with high phase coherence; crafted with premium electronic components to optimise performance and SPL (137 dB peak at 1 metre).
- HEPC® (High-End Phase Coherence) filter technology.
- Design based on low-curvature flat wavefront.
- Cabinet with asymmetrical pattern of 90° horizontal dispersion.
- Tilt can be adjusted in 9 steps from 0° to 9°.
- Digital laser inclinometer kit for installation in rigging bumper (optional).
- Made with 18-ply Finnish birch wood.
- Finished with a special waterproof polyurea coating resistant to erosion and degradation.
- Robust construction in panels assembled with tongue-and-groove techniques and subsequently glued and pressed.
- Front grid with hexagonal punching and high-resistance epoxy finish.
- Special acoustic foam coating for protection of the loudspeakers against dust and dirt.
- Maga Engineering® limited 5-year warranty.

HEPC 
HIGH-END PHASE COHERENCE





TECHNICAL SPECIFICATIONS

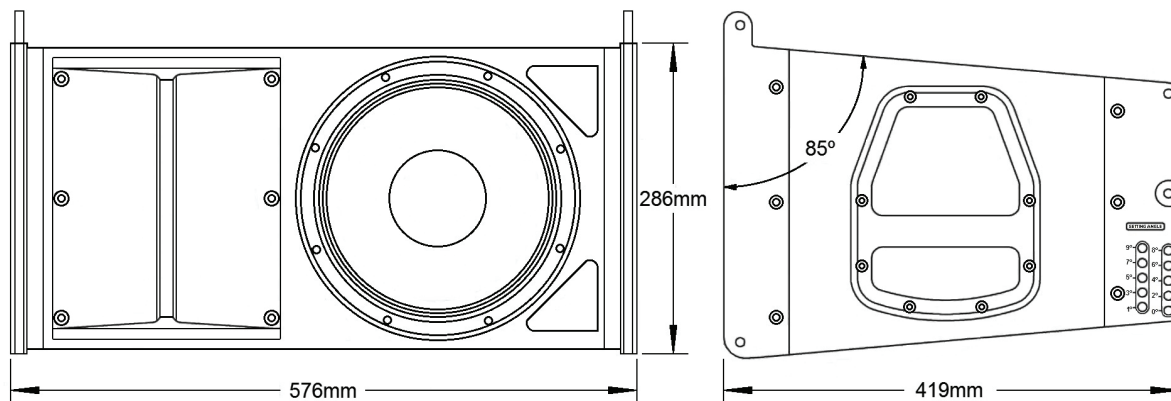
Frequency response:	50 Hz - 20 KHz
Sensitivity (1 W at 1 metre):	102 dB
Admissible power (continuous):	500 W AES
Recommended amplification:	600 W
Rated impedance:	16 Ω
Maximum SPL:	137 dB peak at 1 metre (with V2 filter)
Coverage angle (-6 dB):	Horizontal: 90° / Vertical: defined by the array (min. 20°)
Bass components:	1 x 10" neodymium, 450 W AES
Treble components:	2 x 0.8" neodymium, 40 W AES each

CABINET DIMENSIONS

Front:	576 x 286 mm
Rear:	419 mm
Net weight:	24 kg
Connections:	2 x Neutrik® 4-pole speakON®, +1-1 connection



DIMENSIONS



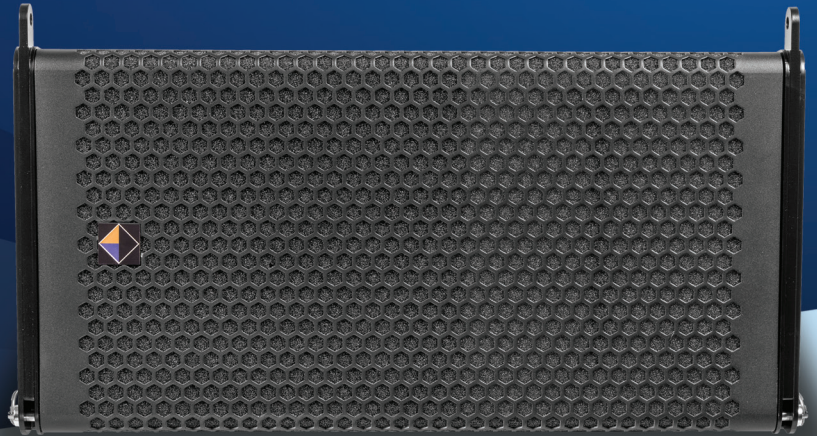
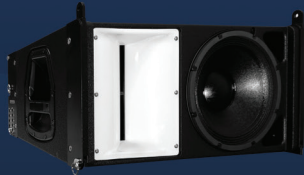
VERTICAL SERIES • ME10V Wide

Compact line-array system with 120° horizontal dispersion

- Custom components.
- Designed for wide horizontal dispersion arrays and for use as down-fill in standard ME10V element configurations.
- Symmetrical L/R design guarantees acoustic symmetry.
- 2-way cabinet (1 x 10", 2 x 0.8" drivers). Passive filter with high phase coherence; crafted with premium electronic components to optimise performance and SPL (137 dB peak at 1 metre).
- HEPC® (High-End Phase Coherence) filter technology.
- Design based on low-curvature flat wavefront.
- Cabinet with asymmetrical pattern of 120° horizontal dispersion.
- Tilt can be adjusted in 9 steps from 0° to 9°.
- Digital laser inclinometer kit for installation in rigging bumper (optional).
- Made with 18-ply Finnish birch wood.
- Finished with a special waterproof polyurea coating resistant to erosion and degradation.
- Robust construction in panels assembled with tongue-and-groove techniques and subsequently glued and pressed.
- Front grid with hexagonal punching and high-resistance epoxy finish.
- Special acoustic foam coating for protection of the loudspeakers against dust and dirt.
- Maga Engineering® limited 5-year warranty.



The white colour of the 120° diffuser distinguishes this version from the standard ME10V.





TECHNICAL SPECIFICATIONS

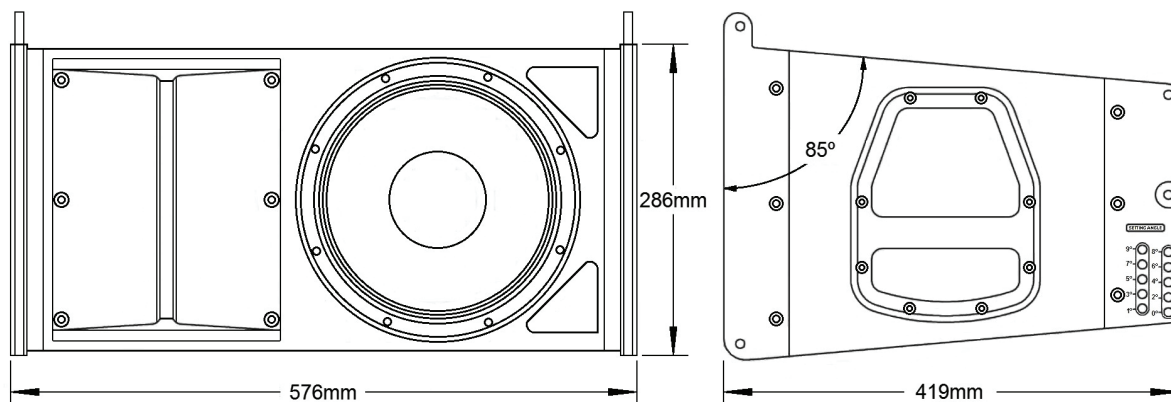
Frequency response:	50 Hz - 20 KHz
Sensitivity (1 W at 1 metre):	102 dB
Admissible power (continuous):	500 W AES
Recommended amplification:	600 W
Rated impedance:	16 Ω
Maximum SPL:	137 dB peak at 1 metre (with V ₂ filter)
Coverage angle (-6 dB):	Horizontal: 120° / Vertical: defined by the array (min. 20°)
Bass components:	1 x 10" neodymium, 450 W AES
Treble components:	2 x 0.8" neodymium, 40 W AES each

CABINET DIMENSIONS

Front:	576 x 286 mm
Rear:	419 mm
Net weight:	24 kg
Connections:	2 x Neutrik® 4-pole speakON®, +1-1 connection



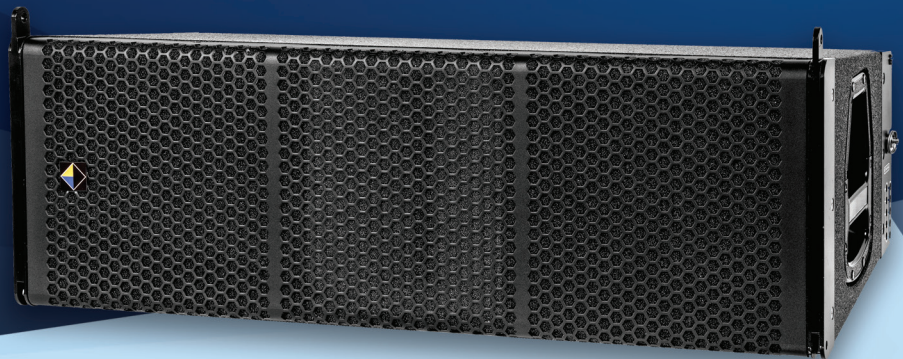
DIMENSIONS



VERTICAL SERIES • ME20V

High-performance line-array system with 100° horizontal dispersion

- Custom components.
- High SPL output (141 dB peak at 1 metre).
- Bi-amplified cabinet (2 active ways, 3 real ways) with 2 x 10" and 3.5" + 1.75" coaxial driver. Passive filter with high phase coherence; crafted with premium electronic components.
- HEPC® (High-End Phase Coherence) filter technology.
- Design based on low-curvature flat wavefront.
- Cabinet with 100° horizontal dispersion.
- Tilt can be adjusted in 9 steps from 0° to 9°.
- Digital laser inclinometer kit for installation in rigging bumper (optional).
- Made with 18-ply Finnish birch wood.
- Finished with a special waterproof polyurea coating resistant to erosion and degradation.
- Robust construction in panels assembled with tongue-and-groove techniques and subsequently glued and pressed.
- Front grid with hexagonal punching and high-resistance epoxy finish.
- Special acoustic foam coating for protection of the loudspeakers against dust and dirt.
- Maga Engineering® limited 5-year warranty.





TECHNICAL SPECIFICATIONS

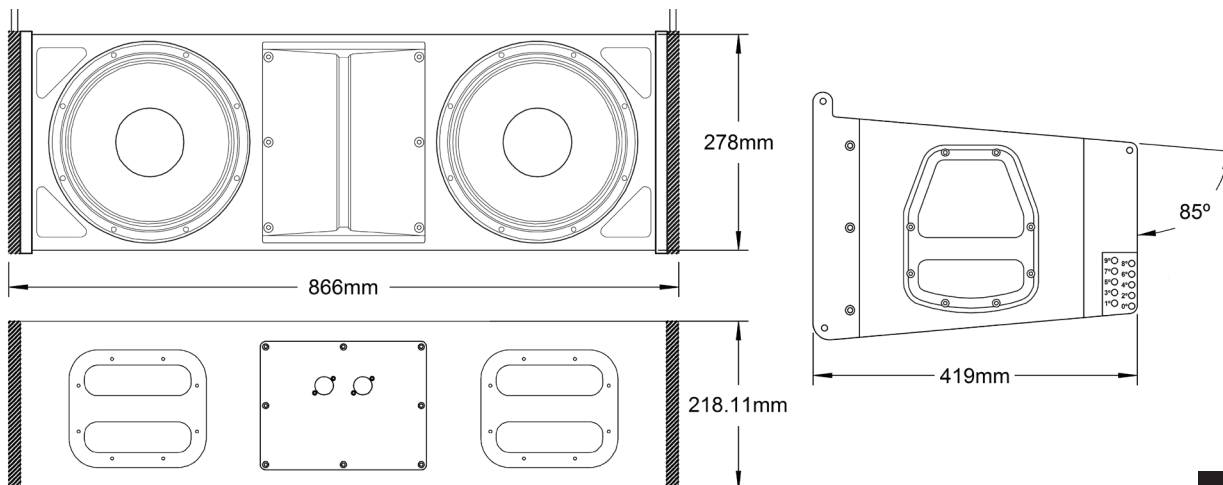
Frequency response:	50 Hz - 20 KHz
Bass/treble sensitivity (1 W at 1 metre):	100 dB / 112 dB
Admissible power (continuous) for bass:	1400 W AES, 16 Ω
Admissible power (continuous) for mid-treble:	230 W AES, 16 Ω
Recommended amplification:	1600 W
Rated impedance:	16 Ω
Maximum SPL:	141 dB peak at 1 metre
Coverage angle (-6 dB):	H orizontal: 100° / Vertical: defined by the array (min. 20°)
Bass components:	2 x 10" neodymium, 700 W AES each
Treble components:	1 x 3.5" + 1 x 1.75" neodymium, 150 W + 80 W AES

CABINET DIMENSIONS

Front:	866 x 278 mm
Rear:	419 mm
Net weight:	33 kg
Connections:	2 x Neutrik® 4-pole speakON®; +1-1 bass / +2-2 mid-treble connection



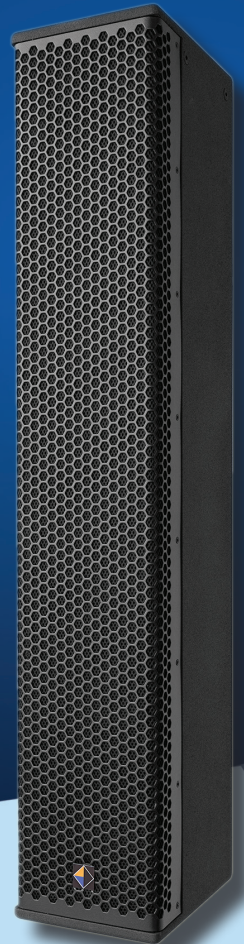
DIMENSIONS



VERTICAL SERIES • ME46V MKII

Compact line-array passive column

- Custom components.
- Exceptional hi-fi sound quality.
- Compact line-array column with 4 x 6.5" and 3 x 1". Reduced to 1 way by means of a passive filter with high phase coherence crafted with premium electronic components.
- High SPL output (137 dB peak at 1 metre).
- HEPC® (High-End Phase Coherence) filter technology.
- 130° horizontal dispersion / 30° vertical dispersion (asymmetrical).
- Ideal for permanent installations where the highest sound quality and voice intelligibility are critical (theatres, auditoria, etcetera). Also suitable for portable PA systems combined with our SUB Series subwoofers.
- Socket for extension bar, mount for microbumper and rigging accessories.
- Made with 18-ply Finnish birch wood.
- Finished with a special waterproof polyurea coating resistant to erosion and degradation.
- Robust construction in panels assembled with tongue-and-groove techniques and subsequently glued and pressed.
- Front grid with hexagonal punching and high-resistance epoxy finish.
- Special acoustic foam coating for protection of the loudspeakers against dust and dirt.
- Maga Engineering® limited 5-year warranty.



HEPC 
HIGH-END PHASE COHERENCE



TECHNICAL SPECIFICATIONS

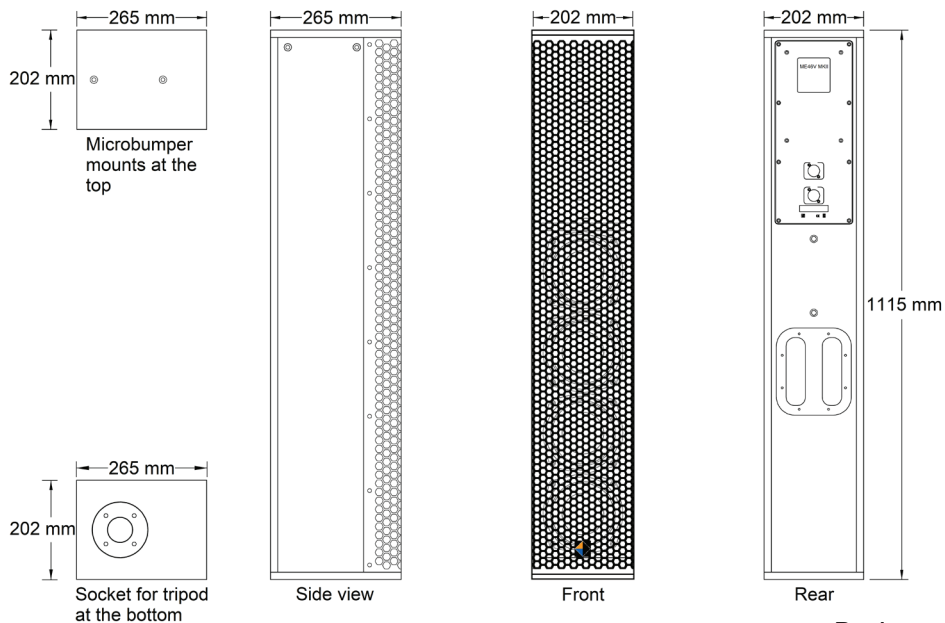
Frequency response (+/- 4 dB):	50 Hz - 20 KHz
Sensitivity (1 W at 1 metre):	100 dB
Admissible power (continuous):	700 W AES, 8 Ω
Recommended amplification:	1000 W to 1500 W
Rated impedance:	8 Ω
Maximum SPL:	137 dB peak at 1 metre
Coverage angle (-6 dB):	Horizontal: 130° / Vertical: 30° (asymmetrical)
Bass components:	4 x 6.5" neodymium, 160 W AES each
Treble components:	3 x 1" neodymium, 60 W AES each

CABINET DIMENSIONS

Front:	1115 x 202 mm
Rear:	265 mm
Net weight:	23 kg
Connections:	2 x Neutrik® 4-pole speakON®, +1-1 connection



DIMENSIONS

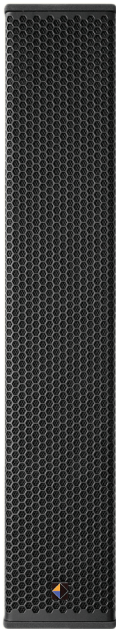


CONFIGURATIONS

The compact line-array column **ME46V MKII** from our **VERTICAL** Series is specifically designed to offer a degree of sonic excellence comparable to the standards of the hi-fi world. It has primarily been conceived for indoor permanent installations (theatres, auditoria, etcetera) where the highest sound quality and voice intelligibility are critical. However, thanks to its wide coverage and astounding performance (**137 dB peak at 1 metre**), it can be used in outdoor settings and also as part of portable PA systems when combined with our **SUB** Series subwoofers.

In particular, the **ME46V MKII / ME218FHA** setup delivers a level of performance and sound quality that stands out as absolutely phenomenal.

This column, remarkably lightweight (**23 kg**) and easy to handle, integrates a custom passive filter with HEPC® (High-End Phase Coherence) filtering technology that optimises the number of necessary amplification channels by reducing the output to 1 way. The recommended amplification for a set of 2 ME46V MKII units plus 2 SUB Series passive subwoofers is the Maga Engineering® **ME 10K** amplifier.



ME46V MKII line-array column



ME46V MKII line-array column stacked on a **ME115SNDX** subwoofer with extension bar



ME46V MKII line-array column stacked on a **ME118SND** subwoofer with extension bar

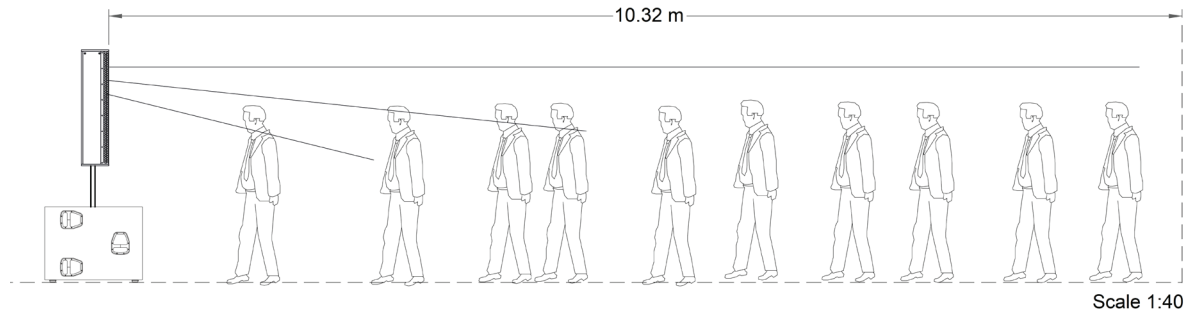


ME46V MKII line-array column stacked on a **ME218FHA** powered subwoofer with extension bar

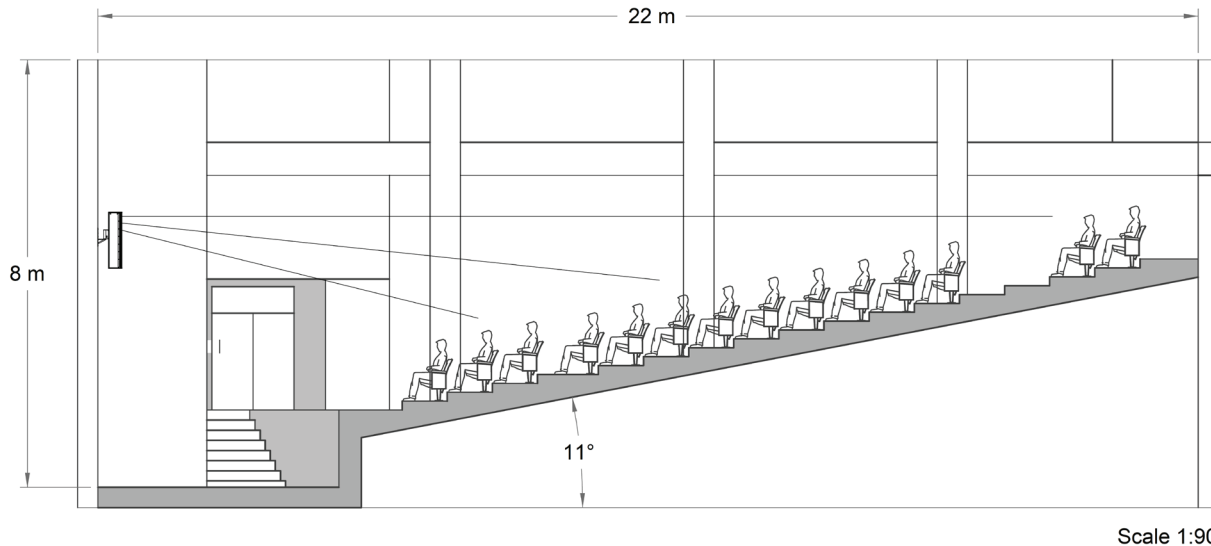
APPLICATIONS

The **ME46V MKII** compact line-array column from the **VERTICAL** Series is suitable for multiple applications, such as the two configurations suggested below:

1) Coverage with the **ME46V MKII** compact line-array column stacked on a **ME218FHA** subwoofer with extension bar.



2) Coverage for a medium-sized theatre or auditorium with the **ME46V MKII** compact line-array column in a wall mount setup.



SUB SERIES • ME115SNDA MKII

Multi-purpose 15" active subwoofer

- Custom components.
- High SPL output (129 dB peak at 1 metre).
- Single, compact-size ferrite 15" speaker.
- Ideal for portable PA systems combined with SPOT and WEDGE Series cabinets. Also perfect for permanent installations.
- Internal 1200 W Class D amplifier with built-in DSP and full digital processing (includes 4 user-selectable presets). Ethernet connection for updates and programming/control with the ArmoníaPlus® System Manager software.
- Auto-regulated power supply (90 V – 250 V).
- Special rubber feet to avoid vibrations and displacements.
- Socket for extension bar in top panel.
- Made with 18-ply Finnish birch wood.
- Finished with a special waterproof polyurea coating resistant to erosion and degradation.
- Robust construction in panels assembled with tongue-and-groove techniques and subsequently glued and pressed.
- Front grid with hexagonal punching and high-resistance epoxy finish.
- Special acoustic foam coating for protection of the loudspeakers against dust and dirt.
- Maga Engineering® limited 5-year warranty.



ArmoníaPlus
System Manager





TECHNICAL SPECIFICATIONS

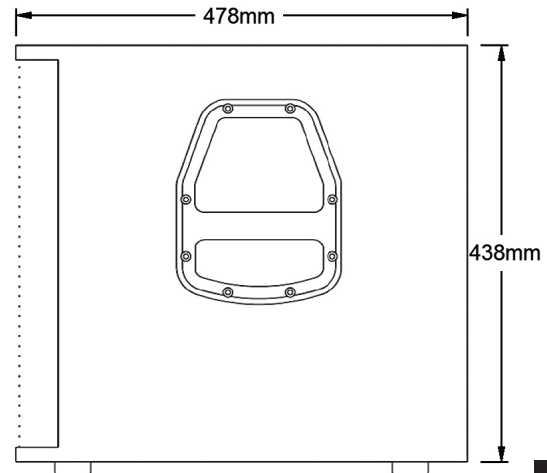
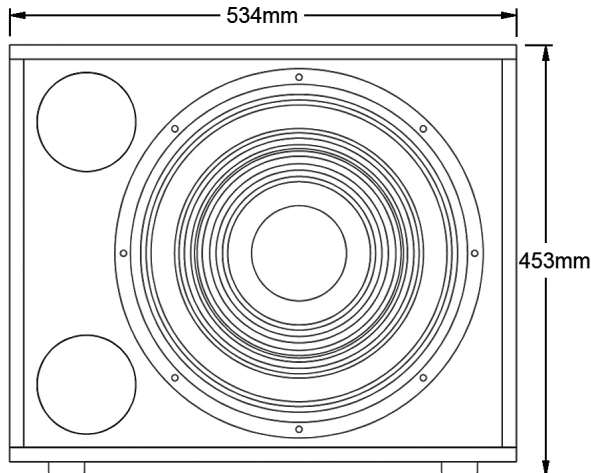
Frequency response:	35 Hz - 100 Hz (+/- 3 dB)
Includes 4 user-selectable presets:	Preset 1: 80 Hz cut Preset 2: 100 Hz cut Preset 3: 80 Hz cut with polarity inversion Preset 4: 100 Hz cut with polarity inversion
Maximum SPL:	129 dB peak at 1 metre
Amplification:	1200 W Class D amplifier at 8 Ω with full digital processing and control via Ethernet with the ArmoníaPlus® System Manager software; maximum network consumption 220 W; admissible voltage from 90 V to 264 V.
Components:	1 x 15" ferrite, 700 W AES, 8 Ω

CABINET DIMENSIONS (INCLUDING LEGS)

Front:	534 x 453 mm
Rear:	478 mm
Net weight:	28 kg
Connections:	2 x Neutrik® powerCON® TRUE male and female; 2 x XLR male and female; 1 x RJ45 Ethernet



DIMENSIONS



SUB SERIES • ME115SND

Multi-purpose 15" passive subwoofer

- Custom components.
 - High SPL output (128 dB peak at 1 metre).
 - Single, compact-size ferrite 15" speaker.
 - Ideal for portable PA systems combined with SPOT and WEDGE Series cabinets. Also perfect for permanent installations.
 - 700 W AES power admission.
 - Special rubber feet to avoid vibrations and displacements.
 - Socket for extension bar in top panel.
 - Made with 18-ply Finnish birch wood.
 - Finished with a special waterproof polyurea coating
- resistant to erosion and degradation.
 - Robust construction in panels assembled with tongue-and-groove techniques and subsequently glued and pressed.
 - Front grid with hexagonal punching and high-resistance epoxy finish.
 - Special acoustic foam coating for protection of the loudspeakers against dust and dirt.
 - Maga Engineering® limited 5-year warranty.





TECHNICAL SPECIFICATIONS

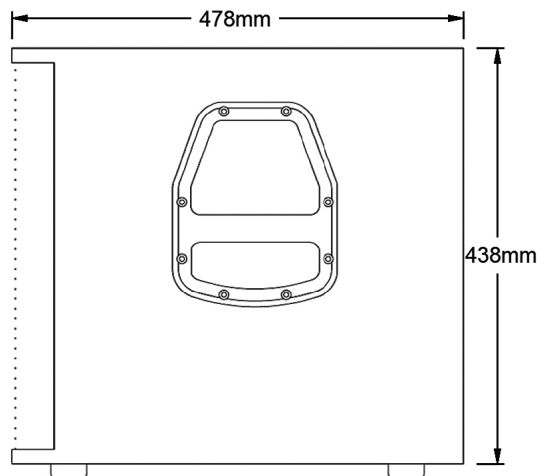
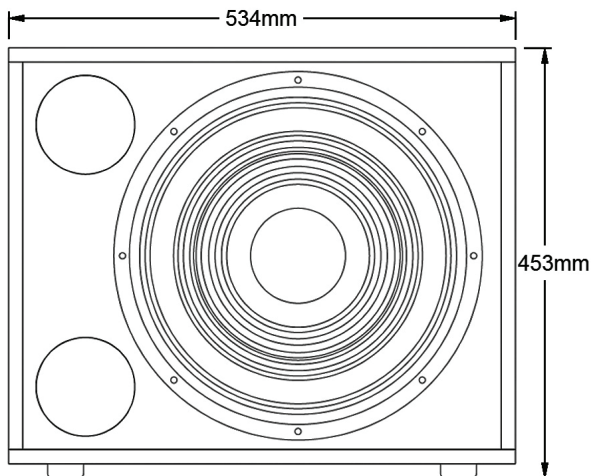
Frequency response:	35 Hz - 200 Hz (+/- 3 dB)
Sensitivity (1 W at 1 metre):	98 dB
Admissible power (continuous):	700 W AES
Recommended amplification:	400 W to 800 W
Rated impedance:	8 Ω
Maximum SPL:	128 dB peak at 1 metre
Components:	1 x 15" ferrite, 700 W AES, 8 Ω

CABINET DIMENSIONS (INCLUDING LEGS)

Front:	534 x 453 mm
Rear:	478 mm
Net weight:	25 kg
Connections:	2 x Neutrik® 4-pole speakON®, +1-1 connection



DIMENSIONS



SUB SERIES • ME115SNDX

High-performance 15" passive subwoofer

- Custom components.
 - High SPL output (129 dB peak at 1 metre).
 - Single, compact-size ferrite 15" speaker.
 - Ideal for portable PA systems combined with SPOT and WEDGE Series cabinets. Also perfect for permanent installations.
 - 1000 W AES power admission.
 - Special rubber feet to avoid vibrations and displacements.
 - Socket for extension bar in top panel.
 - Made with 18-ply Finnish birch wood.
 - Finished with a special waterproof polyurea coating
- resistant to erosion and degradation.
 - Robust construction in panels assembled with tongue-and-groove techniques and subsequently glued and pressed.
 - Front grid with hexagonal punching and high-resistance epoxy finish.
 - Special acoustic foam coating for protection of the loudspeakers against dust and dirt.
 - Maga Engineering® limited 5-year warranty.





TECHNICAL SPECIFICATIONS

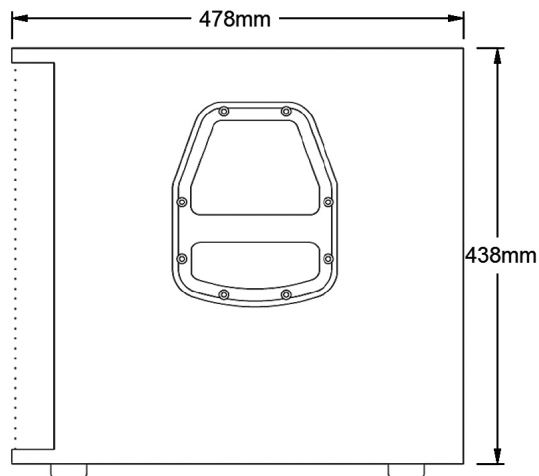
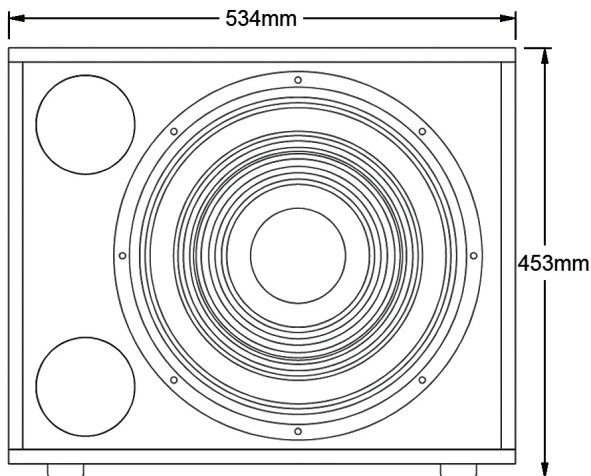
Frequency response:	35 Hz - 200 Hz (+/- 3 dB)
Sensitivity (1 W at 1 metre):	98 dB
Admissible power (continuous):	1000 W AES
Recommended amplification:	600 W to 1200 W
Rated impedance:	8 Ω
Maximum SPL:	129 dB peak at 1 metre
Components:	1 x 15" ferrite, 1000 W AES, 8 Ω

CABINET DIMENSIONS (INCLUDING LEGS)

Front:	534 x 453 mm
Rear:	478 mm
Net weight:	25 kg
Connections:	2 x Neutrik® 4-pole speakON®, +1-1 connection



DIMENSIONS



SUB SERIES • ME118SNDA

High-performance 18" active subwoofer

- Custom components.
- High SPL output (134 dB peak at 1 metre).
- State-of-the-art 18" neodymium speaker with MALTCROSS® advanced cooling technology and lower loss due to power compression. This allows for more constant SPL values within a working period.
- Ideal for portable PA systems combined with the ME12SA cabinets in our SPOT Series.
- Internal 1200 W Class D amplifier with built-in DSP and full digital processing (includes 4 user-selectable presets). Ethernet connection for updates and programming/control with the ArmoníaPlus® System Manager software.
- Auto-regulated power supply (90 V – 264 V).
- Special rubber feet to avoid vibrations and displacements.
- Socket for extension bar in top panel.
- Made with 18-ply Finnish birch wood.
- Finished with a special waterproof polyurea coating resistant to erosion and degradation.
- Robust construction in panels assembled with tongue-and-groove techniques and subsequently glued and pressed.
- Front grid with hexagonal punching and high-resistance epoxy finish.
- Special acoustic foam coating for protection of the loudspeakers against dust and dirt.
- Maga Engineering® limited 5-year warranty.



ArmoníaPlus
System Manager





TECHNICAL SPECIFICATIONS

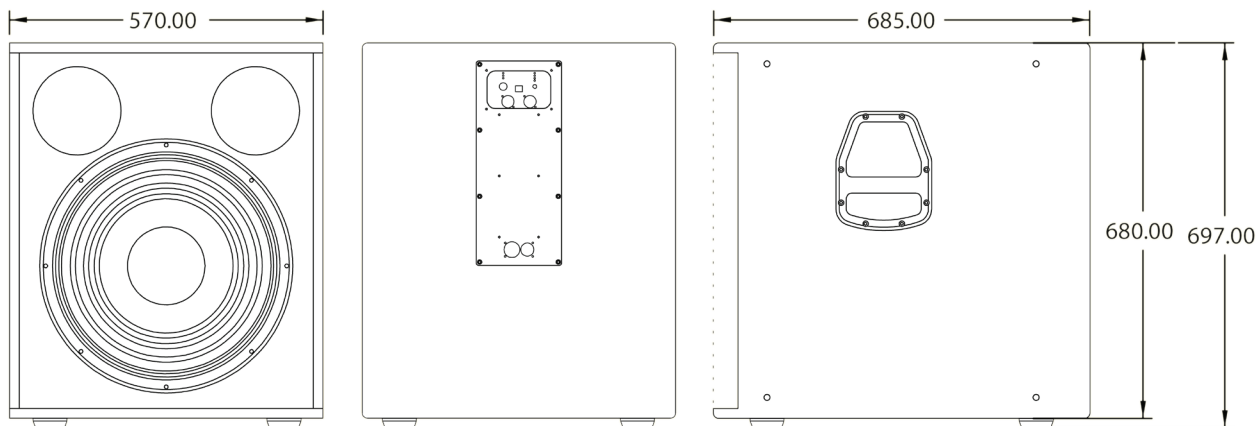
Frequency response:	35 Hz - 100 Hz (+/- 3 dB)
Includes 4 user-selectable presets:	Preset 1: 80 Hz cut Preset 2: 100 Hz cut Preset 3: 90 Hz for ME46VA (coming soon) Preset 4: 80 Hz cut with polarity inversion
Maximum SPL:	134 dB peak at 1 metre
Amplification:	1200 W Class D amplifier at 8 Ω with full digital processing and control via Ethernet with the ArmoniaPlus [®] System Manager software. Maximum network consumption 220 W. Admissible voltage from 90 V to 264 V.
Components:	1 x 18" neodymium, 1000 W AES, 8 Ω

CABINET DIMENSIONS (INCLUDING LEGS)

Front:	570 x 697 mm
Rear:	685 mm
Net weight:	48 kg
Connections:	2 x Neutrik [®] powerCON [®] TRUE male and female; 2 x XLR male and female; 1 x RJ45 Ethernet



DIMENSIONS



SUB SERIES • ME118SND

High-performance 18" passive subwoofer

- Custom components.
- High SPL output (134 dB peak at 1 metre).
- State-of-the-art 18" neodymium speaker with MALTCROSS® advanced cooling technology and lower loss due to power compression. This allows for more constant SPL values within a working period.
- Subwoofer designed with an internal metal reinforcement structure; prepared for rigging with optional bumper and accessories kit.
- Ideal for PA systems in permanent installations (theatres, auditoria, etcetera) combined with line-array ME10V cabinets in the VERTICAL Series. Also suitable for portable PA systems together with the SPOT Series ME12S and VERTICAL Series ME46V MKII cabinets.
- Special rubber feet to avoid vibrations and displacements.
- Socket for extension bar in top panel.
- Made with 18-ply Finnish birch wood.
- Finished with a special waterproof polyurea coating resistant to erosion and degradation.
- Robust construction in panels assembled with tongue-and-groove techniques and subsequently glued and pressed.
- Front grid with hexagonal punching and high-resistance epoxy finish.
- Special acoustic foam coating for protection of the loudspeakers against dust and dirt.
- Maga Engineering® limited 5-year warranty.





TECHNICAL SPECIFICATIONS

Frequency response:	35 Hz - 200 Hz (+/- 3 dB)
Sensitivity (1 W at 1 metre):	98 dB
Admissible power (continuous):	1000 W AES
Recommended amplification:	800 W to 2000 W
Rated impedance:	8 Ω
Maximum SPL:	134 dB peak at 1 metre
Components:	1 x 18" neodymium, 1000 W AES, 8 Ω

CABINET DIMENSIONS (INCLUDING LEGS)

Front:	570 x 697 mm
Rear:	685 mm
Net weight:	46 kg
Connections:	2 x Neutrik® 4-pole speakON®; +1-1 connection

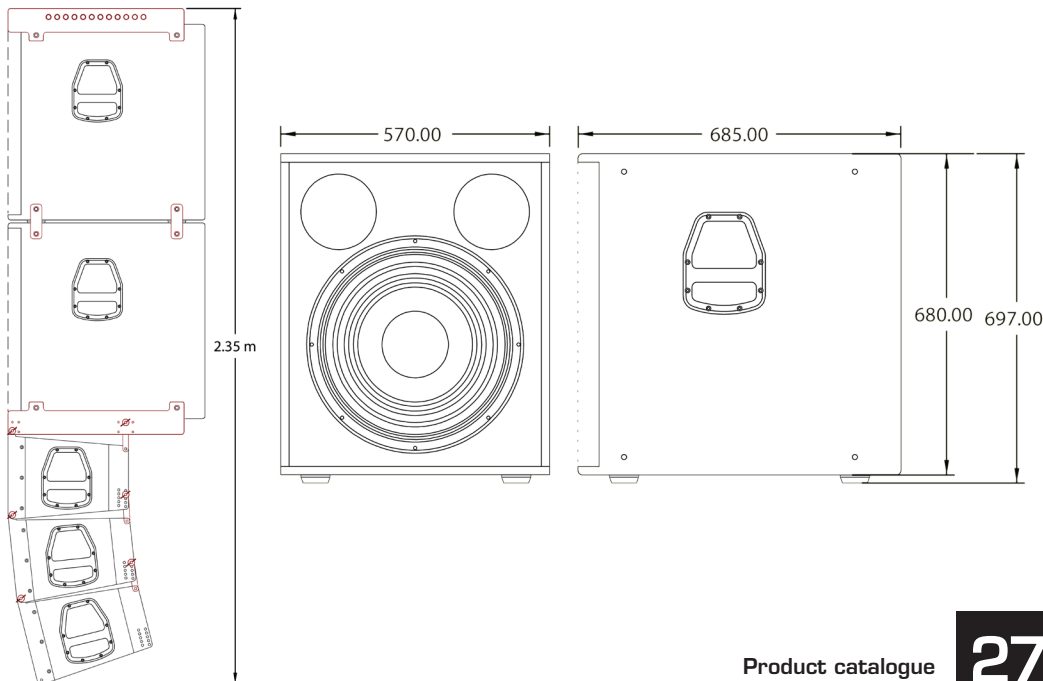


DIMENSIONS

An example of a rigged system consisting of 2 ME118SND subwoofers and 3 ME10V line-array units.

This arrangement is NOT RECOMMENDED for touring setups, but it is suitable for permanent installations (theatres, auditoria, etcetera) where the available space is not big enough to allow placement of the subwoofers on the floor (the position where they achieve their maximum performance).

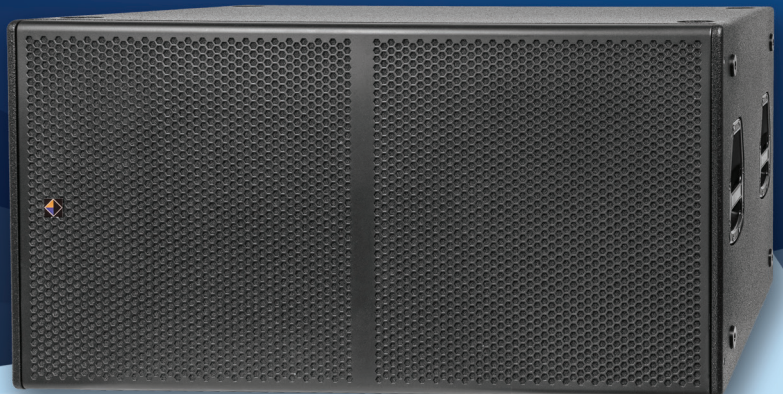
The subwoofers are reinforced with an internal metal structure capable of withstanding very heavy weights. In this kind of configuration, the potential problem lies in the vertical length of the rigged set, which might end up situated too close to the stage level and could be visually intrusive. Therefore, WE DON'T RECOMMEND using a rigged setup of more than 4 subwoofers alone or a combined arrangement of up to 2 ME118SND subwoofers and 6 ME10V line-array units.



SUB SERIES • ME218SNDX

Dual 18" passive subwoofer

- Custom components.
- High SPL output (138 dB peak at 1 metre).
- State-of-the-art 18" neodymium speakers with MALTCROSS® advanced cooling technology and lower loss due to power compression. This allows for more constant SPL values within a working period.
- 2000 W AES power admission.
- Special rubber feet to avoid vibrations and displacements.
- Designed for both horizontal and vertical placement.
- Nut pre-installation for 4 x 100 mm GUITEL® wheels.
- Made with 18-ply Finnish birch wood.
- Finished with a special waterproof polyurea coating resistant to erosion and degradation.
- Robust construction in panels assembled with tongue-and-groove techniques and subsequently glued and pressed.
- Front grid with hexagonal punching and high-resistance epoxy finish.
- Special acoustic foam coating for protection of the loudspeakers against dust and dirt.
- Maga Engineering® limited 5-year warranty.





TECHNICAL SPECIFICATIONS

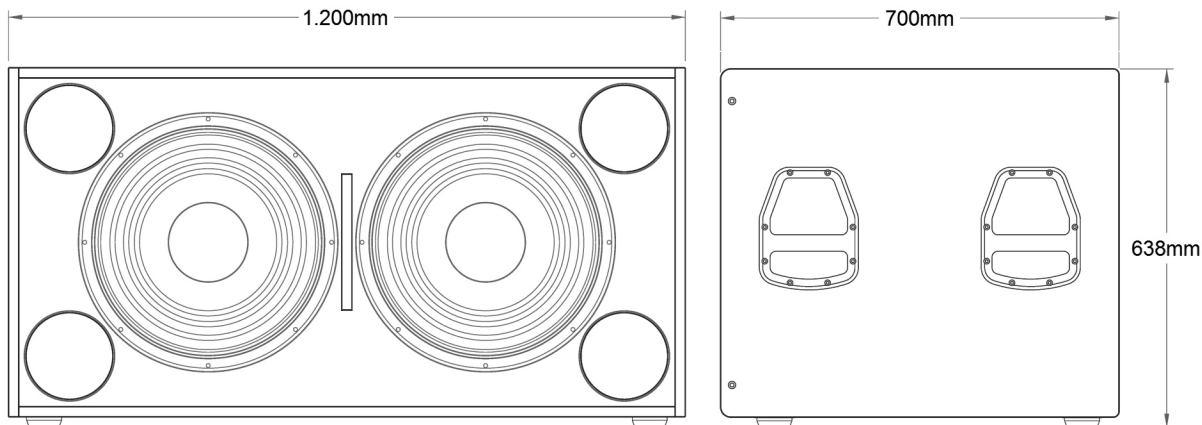
Frequency response:	40 Hz - 200 Hz (+/- 3 dB)
Sensitivity (1 W at 1 metre):	101 dB
Admissible power (continuous):	2000 W AES
Recommended amplification:	1400 W to 2800 W
Rated impedance:	4 Ω
Maximum SPL:	138 dB peak at 1 metre
Components:	2 x 18" neodymium, 1000 W AES each

CABINET DIMENSIONS (INCLUDING LEGS)

Front:	1200 x 638 mm
Rear:	700 mm
Net weight:	89 kg
Connections:	2 x Neutrik® 4-pole speakON®; +1-1 connection



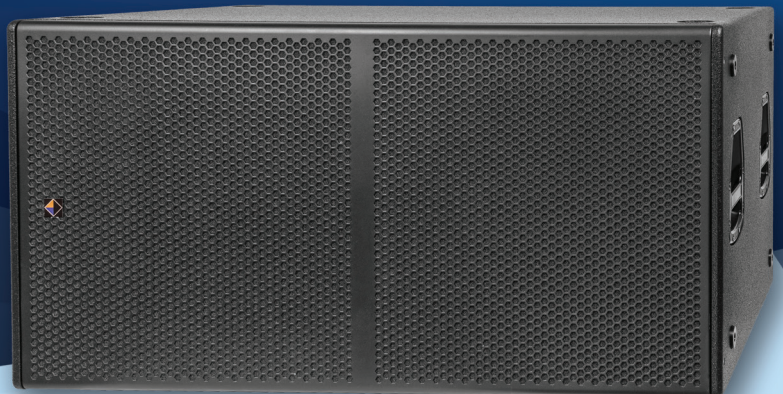
DIMENSIONS



SUB SERIES • ME218LEX

High-performance dual 18" passive subwoofer

- Custom components.
- High SPL output (140 dB peak at 1 metre).
- State-of-the-art 18" neodymium speakers with MALTCROSS® advanced cooling technology and lower loss due to power compression. This allows for more constant SPL values within a working period.
- High power admission (3200 W AES).
- Special rubber feet to avoid vibrations and displacements.
- Designed for horizontal and vertical placement.
- Nut pre-installation for 4 x 100 mm GUITEL® wheels.
- Made with 18-ply Finnish birch wood.
- Finished with a special waterproof polyurea coating resistant to erosion and degradation.
- Robust construction in panels assembled with tongue-and-groove techniques and subsequently glued and pressed.
- Front grid with hexagonal punching and high-resistance epoxy finish.
- Special acoustic foam coating for protection of the loudspeakers against dust and dirt.
- Maga Engineering® limited 5-year warranty.





TECHNICAL SPECIFICATIONS

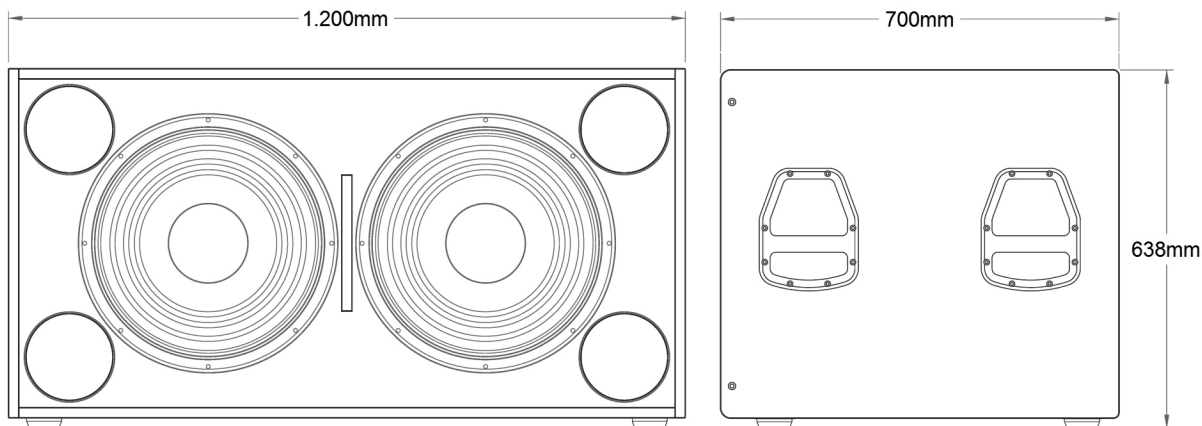
Frequency response:	40 Hz - 200 Hz (+/- 3 dB)
Sensitivity (1 W at 1 metre):	100 dB
Admissible power (continuous):	3200 W AES
Recommended amplification:	2000 W to 4000 W
Rated impedance:	4 Ω
Maximum SPL:	140 dB peak at 1 metre
Components:	2 x 18" neodymium, 1600 W AES each

CABINET DIMENSIONS (INCLUDING LEGS)

Front:	1200 x 638 mm
Rear:	700 mm
Net weight:	93 kg
Connections:	2 x Neutrik® 4-pole speakON®; +1-1 connection



DIMENSIONS



SUB SERIES • ME218FHA

High-performance dual 18" active subwoofer

- Custom components.
- High SPL output (139 dB peak at 1 metre).
- State-of-the-art 18" neodymium speakers.
- Ideal for portable PA systems combined with the ME10V and ME46V MKII cabinets in our VERTICAL Series, and for DJ settings together with the ME12Z model in the HORIZON Series.
- Internal 3000 W + 3000 W Class D amplifier with built-in DSP.
- Auto-regulated power supply (85 V – 265 V).
- Special rubber feet to avoid vibrations and displacements.
- Socket for extension bar in top panel.
- 100 mm GUITEL® wheels installed on the rear panel for easier transport.
- Made with 18-ply Finnish birch wood.
- Finished with a special waterproof polyurea coating resistant to erosion and degradation.
- Robust construction in panels assembled with tongue-and-groove techniques and subsequently glued and pressed.
- Hexagonal front grid and high-resistance epoxy finish.
- Special acoustic foam coating for protection of the loudspeakers against dust and dirt.
- Maga Engineering® limited 5-year warranty.





TECHNICAL SPECIFICATIONS

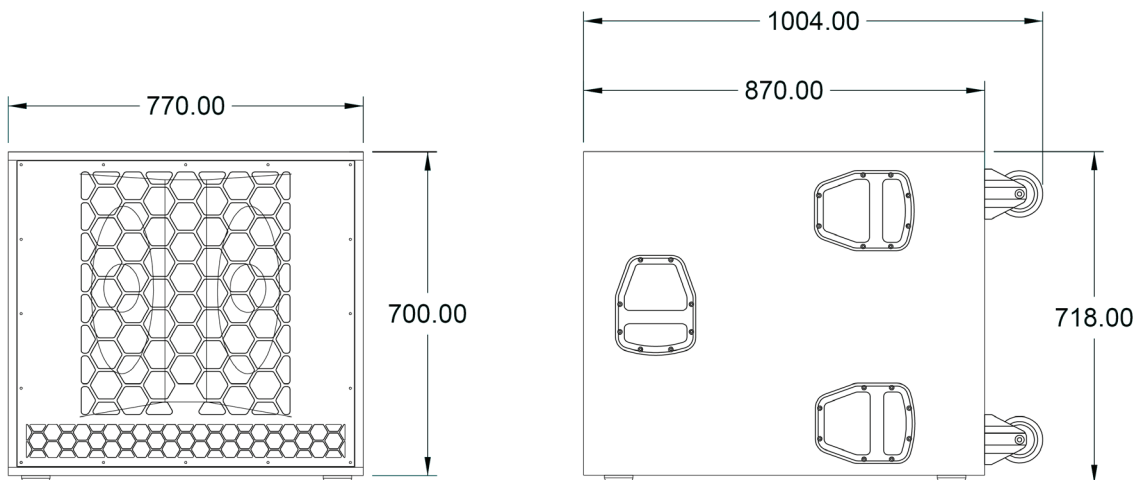
Frequency response:	35 Hz - 200 Hz (+/- 3 dB)
Includes 4 user-selectable presets:	Preset 1: for connection to 1 ME12Z unit Preset 2: for connection to 1 ME46V MKII unit Preset 3: for connection to a cluster of 2 ME10V units Preset 4: for operation as external subwoofer
Maximum SPL:	139 dB peak at 1 metre
Amplification:	2 x 3000 W Class D amplifiers at 4 Ω each. Bi-amplified stage with full digital processing. Maximum network consumption 220 W. Admissible voltage from 85 V to 265 V.
Components:	2 x 18" neodymium, 1000 W AES each

CABINET DIMENSIONS (INCLUDING LEGS)

Front:	770 x 718 mm
Rear:	870 mm (1004 mm including wheels)
Net weight:	90 kg
Connections:	XLR input, XLR link, Neutrik® powerCON® TRUE input-output, USB, 2 x RJ45 Ethernet



DIMENSIONS



SUB SERIES • ME218FH

High-performance dual 18" passive subwoofer

- Custom components.
- High SPL output (139 dB peak at 1 metre).
- State-of-the-art 18" neodymium speakers.
- Ideal for portable PA systems combined with the ME10V and ME46V MKII cabinets in our VERTICAL Series, and for DJ settings together with the ME12Z model in the HORIZON Series.
- High power admission (2000 W AES).
- Special rubber feet to avoid vibrations and displacements.
- Socket for extension bar in top panel.
- 100 mm GUITEL® wheels installed on the rear panel for easier transport.
- Made with 18-ply Finnish birch wood.
- Finished with a special waterproof polyurea coating resistant to erosion and degradation.
- Robust construction in panels assembled with tongue-and-groove techniques and subsequently glued and pressed.
- Hexagonal front grid and high-resistance epoxy finish.
- Special acoustic foam coating for protection of the loudspeakers against dust and dirt.
- Maga Engineering® limited 5-year warranty.





TECHNICAL SPECIFICATIONS

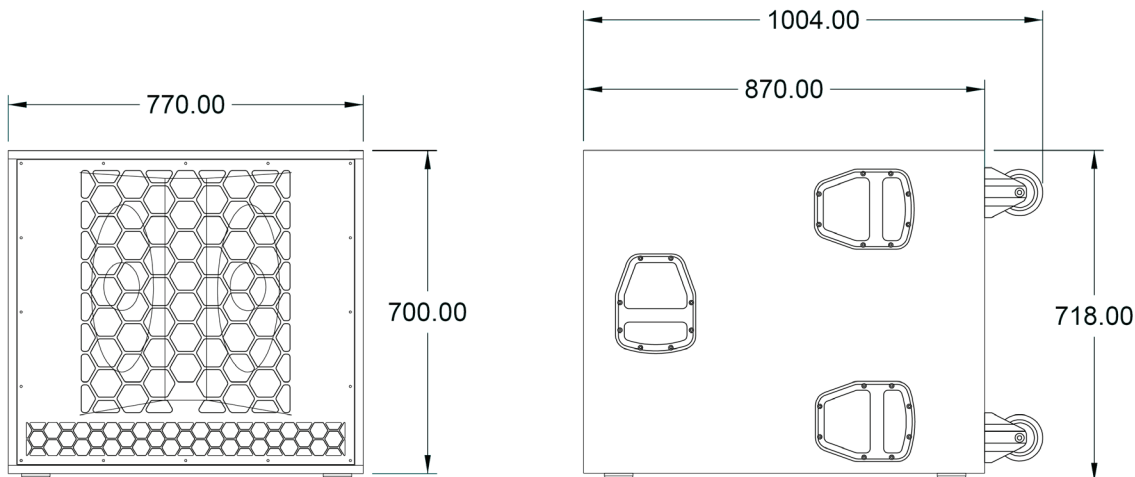
Frequency response:	35 Hz - 200 Hz (+/- 3 dB)
Sensitivity (1 W at 1 metre):	100 dB
Admissible power (continuous):	2000 W AES
Recommended amplification:	1500 W to 2500 W
Rated impedance:	4 Ω
Maximum SPL:	139 dB peak at 1 metre
Components:	2 x 18" neodymium, 1000 W AES each

CABINET DIMENSIONS (INCLUDING LEGS)

Front:	770 x 718 mm
Rear:	870 mm (1004 mm including wheels)
Net weight:	88 kg
Connections:	2 x Neutrik® 4-pole speakON®, +1-1 connection



DIMENSIONS



WEDGE SERIES • ME12WAX

Multi-purpose active stage monitor

- Custom components.
- Powered stage monitor with coaxial driver (1 x 12" + 1 x 2.84").
- Low feedback.
- Excellent performance as monitor.
- Includes 800 W + 200 W Class D amplifier.
- Light weight (19.5 kg).
- Full internal digital processing (includes 4 user-selectable presets) and Ethernet connection for updates and programming/control with the ArmoníaPlus® System Manager software.
- Socket for standard tripod with two mounting positions at 0° and 5°.
- Made with 18-ply Finnish birch wood.
- Finished with a special waterproof polyurea coating resistant to erosion and degradation.
- Robust construction in panels assembled with tongue-and-groove techniques and subsequently glued and pressed.
- Front grid with hexagonal punching and high-resistance epoxy finish.
- Front grid with hexagonal punching and high-resistance epoxy finish.
- Special acoustic foam coating for protection of the loudspeakers against dust and dirt.
- Maga Engineering® limited 5-year warranty.



ArmoníaPlus
System Manager





TECHNICAL SPECIFICATIONS

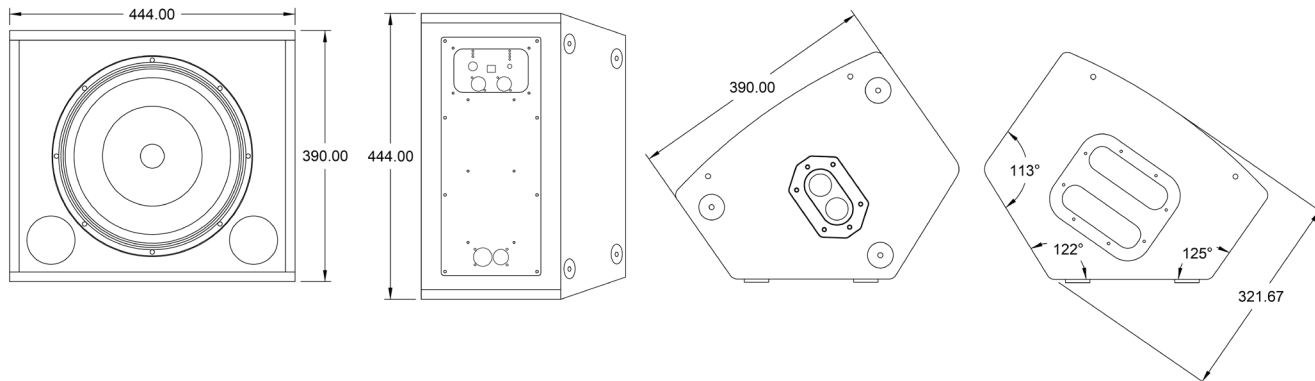
Frequency response:	52 Hz – 20 KHz (+/- 2 dB in preset 4)
Maximum SPL:	128 dB peak at 1 metre
Includes 4 user-selectable presets:	Preset 1: full-range Preset 2: floor monitor Preset 3: 100 Hz cut for use with subwoofer Preset 4: flat
Diffuser:	60°, conical
Amplification:	800 W Class D amplifier at 4 Ω (12" speaker) + 200 W at 16 Ω (2.84" driver) with full digital processing and control via Ethernet with the ArmoníaPlus® System Manager software. Maximum network consumption 220 W. Admissible voltage from 90 V to 264 V.
Bass components:	1 x 12" neodymium, 500 W AES, 8 Ω
Treble components:	1 x 2.84" neodymium, 90 W AES, 16 Ω

CABINET DIMENSIONS

Front:	444 x 390 mm
Rear:	321.67 mm
Net weight:	19.5 kg
Connections:	2 x Neutrik® powerCON® TRUE male and female; 2 x XLR male and female; 1 x RJ45 Ethernet



DIMENSIONS



WEDGE SERIES • ME12WX

Multi-purpose passive stage monitor

- Custom components.
- Passive stage monitor with 1 x 12" + 1 x 2.84" coaxial driver.
- Passive filter with high phase coherence; crafted with premium electronic components.
- HEPC® (High-End Phase Coherence) filter technology.
- PA/monitor position.
- Excellent performance as monitor.
- Low feedback.
- Light weight (21.3 kg).
- Socket for standard tripod with two mounting positions at 0° and 5°.
- Made with 18-ply Finnish birch wood.
- Finished with a special waterproof polyurea coating resistant to erosion and degradation.
- Robust construction in panels assembled with tongue-and-groove techniques and subsequently glued and pressed.
- Front grid with hexagonal punching and high-resistance epoxy finish.
- Special acoustic foam coating for protection of the loudspeakers against dust and dirt.
- Maga Engineering® limited 5-year warranty.



Armonía+Plus
System Manager





TECHNICAL SPECIFICATIONS

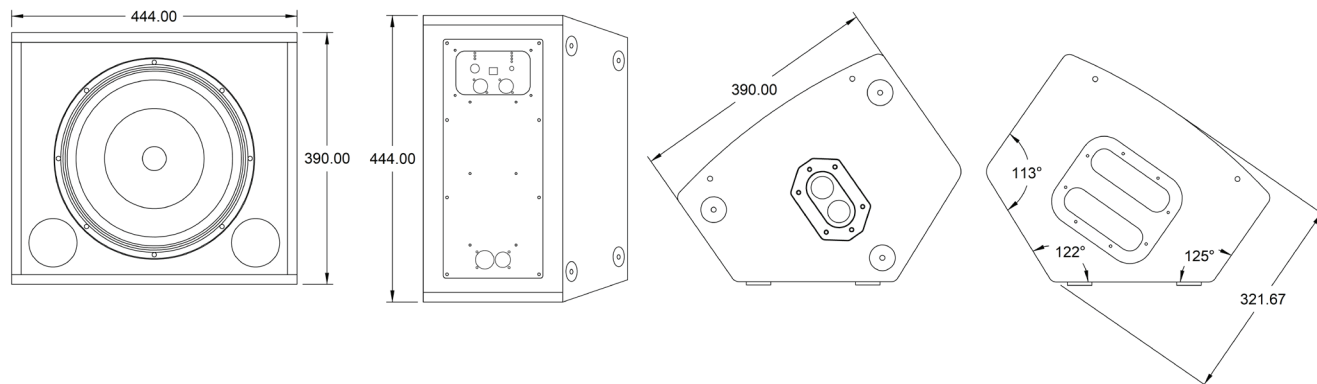
Frequency response:	52 Hz – 20 KHz (+/- 3 dB)
Sensitivity (1 W at 1 metre):	96 dB
Maximum SPL:	128 dB peak at 1 metre
Diffuser:	60°, conical
Recommended amplification:	600 W to 1000 W
Bass components:	1 x 12" ferrite, 500 W AES, 8 Ω
Treble components:	1 x 2.84" neodymium, 90 W AES, 16 Ω

CABINET DIMENSIONS

Front:	444 x 390 mm
Rear:	321.67 mm
Net weight:	21.3 kg
Connections:	2 x Neutrik® speakON®



DIMENSIONS

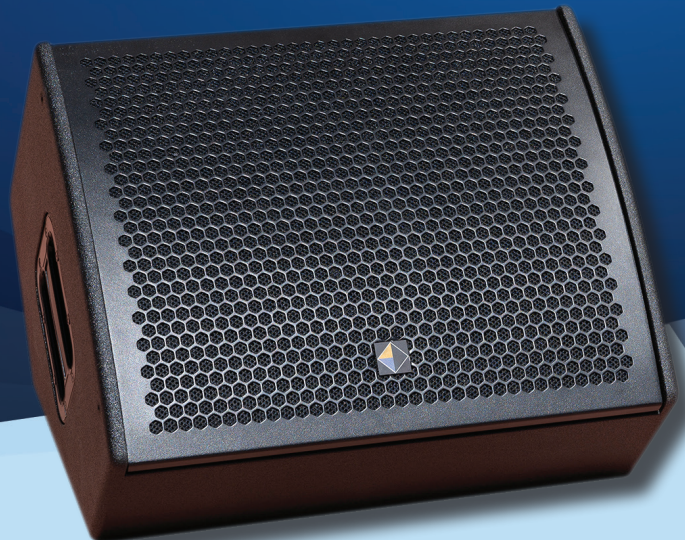


WEDGE SERIES • ME15WAX

High-performance active stage monitor

- Custom components.
- Powered stage monitor with coaxial driver (1 x 15" + 1 x 2.84").
- Low feedback.
- Excellent performance as monitor.
- Includes 800 W + 200 W Class D amplifier.
- Light weight (23 kg).
- Full internal digital processing (includes 4 user-selectable presets) and Ethernet connection for updates and programming/control with the ArmoníaPlus® System Manager software.
- Socket for standard tripod with two mounting positions at 0° and 5°.
- Made with 18-ply Finnish birch wood.
- Finished with a special waterproof polyurea coating resistant to erosion and degradation.
- Robust construction in panels assembled with tongue-and-groove techniques and subsequently glued and pressed.
- Front grid with hexagonal punching and high-resistance epoxy finish.
- Special acoustic foam coating for protection of the loudspeakers against dust and dirt.
- Maga Engineering® limited 5-year warranty.

ArmoníaPlus
System Manager





TECHNICAL SPECIFICATIONS

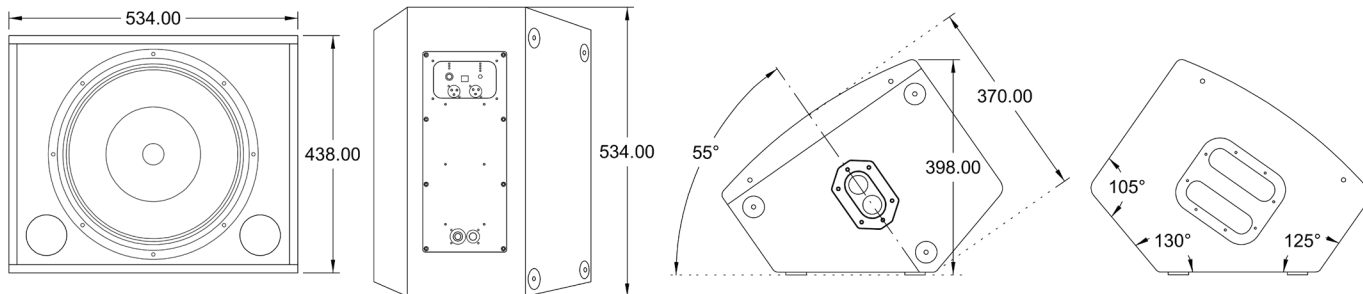
Frequency response:	45 Hz – 20 KHz (+/- 2 dB in preset 4)
Maximum SPL:	132 dB peak at 1 metre
Includes 4 user-selectable presets:	Preset 1: full-range Preset 2: floor monitor Preset 3: 100 Hz cut for use with subwoofer Preset 4: flat
Diffuser:	60°, conical
Amplification:	800 W Class D amplifier at 4 Ω (15" speaker) + 200 W at 16 Ω (2.84" driver) with full digital processing and control via Ethernet with the ArmoníaPlus® System Manager software. Maximum network consumption 220 W. Admissible voltage from 90 V to 264 V.
Bass components:	1 x 15" neodymium, 500 W AES, 8 Ω
Treble components:	1 x 2.84" neodymium, 90 W AES, 16 Ω

CABINET DIMENSIONS (INCLUDING LEGS)

Front:	444 x 390 mm
Rear:	370 mm
Net weight:	23 kg
Connections:	2 x Neutrik® powerCON® TRUE male and female; 2 x XLR male and female; 1 x RJ45 Ethernet



DIMENSIONS

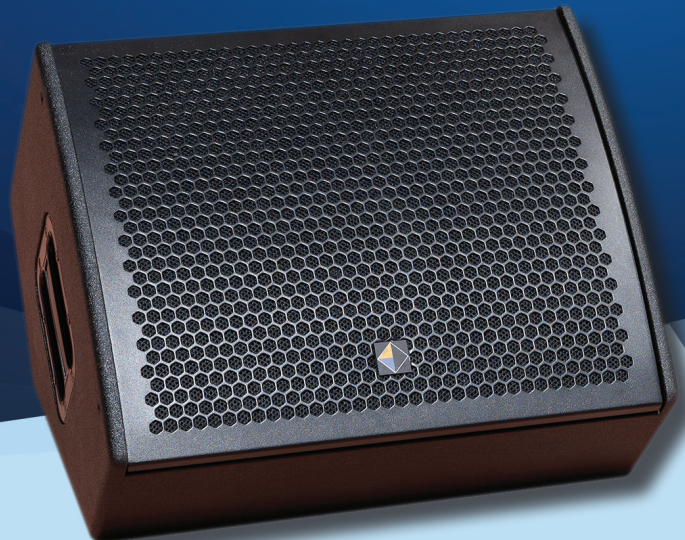


WEDGE SERIES • ME15WX

High-performance passive stage monitor

- Custom components.
- Passive stage monitor with 1 x 15" + 1 x 2.84" coaxial driver.
- Passive filter with high phase coherence; crafted with premium electronic components.
- HEPC® (High-End Phase Coherence) filter technology.
- PA/monitor position.
- Excellent performance as monitor.
- Low feedback.
- Socket for standard tripod with two mounting positions at 0° and 5°.
- Made with 18-ply Finnish birch wood.
- Finished with a special waterproof polyurea coating resistant to erosion and degradation.
- Robust construction in panels assembled with tongue-and-groove techniques and subsequently glued and pressed.
- Front grid with hexagonal punching and high-resistance epoxy finish.
- Special acoustic foam coating for protection of the loudspeakers against dust and dirt.
- Maga Engineering® limited 5-year warranty.

Armonía-Plus
System Manager





TECHNICAL SPECIFICATIONS

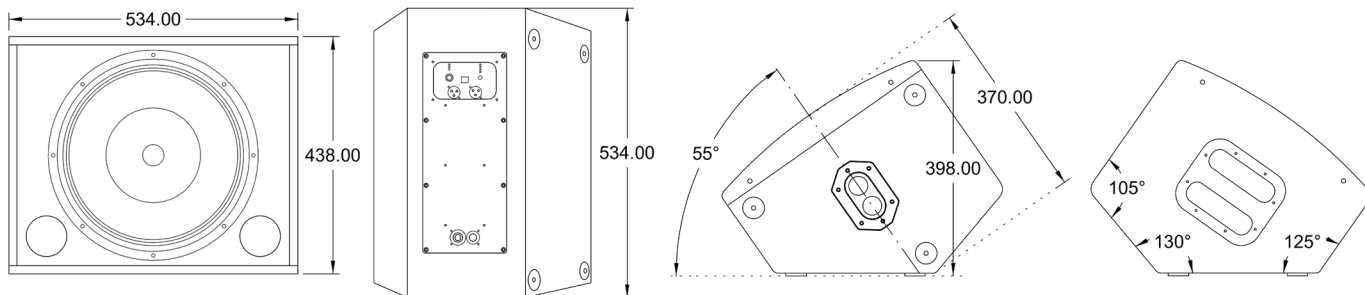
Frequency response:	45 Hz – 20 KHz (+/- 3 dB)
Sensitivity (1 W at 1 metre):	98 dB
Maximum SPL:	132 dB peak at 1 metre
Diffuser:	60°, conical
Recommended amplification:	600 W to 1000 W
Bass components:	1 x 15" ferrite, 500 W AES, 8 Ω
Treble components:	1 x 2.84" neodymium, 90 W AES, 16 Ω

CABINET DIMENSIONS (INCLUDING LEGS)

Front:	534 x 438 mm
Rear:	370 mm
Net weight:	26.4 kg
Connections:	2 x Neutrik® speakON®



DIMENSIONS



HORIZON SERIES • ME12Z

High-performance passive trapezoidal cabinet for horizontal array

- Custom components.
- High SPL output (134 dB peak at 1 metre).
- Designed for high-performance PA.
- 90° x 60° rotatable diffuser optional (60° x 40° for horizontal array).
- Excellent performance in horizontal arrays of up to 3 cabinets.
- Passive filter with high phase coherence and multiple protections; crafted with premium electronic components.
- HEPC® (High-End Phase Coherence) filter technology.
- 12 rigging points per M10 nut. Socket for standard tripod.
- Made with 18-ply Finnish birch wood.
- Finished with a special waterproof polyurea coating resistant to erosion and degradation.
- Robust construction in panels assembled with tongue-and-groove techniques and subsequently glued and pressed.
- Front grid with hexagonal punching and high-resistance epoxy finish.
- Special acoustic foam coating for protection of the loudspeakers against dust and dirt.
- Maga Engineering® limited 5-year warranty.





TECHNICAL SPECIFICATIONS

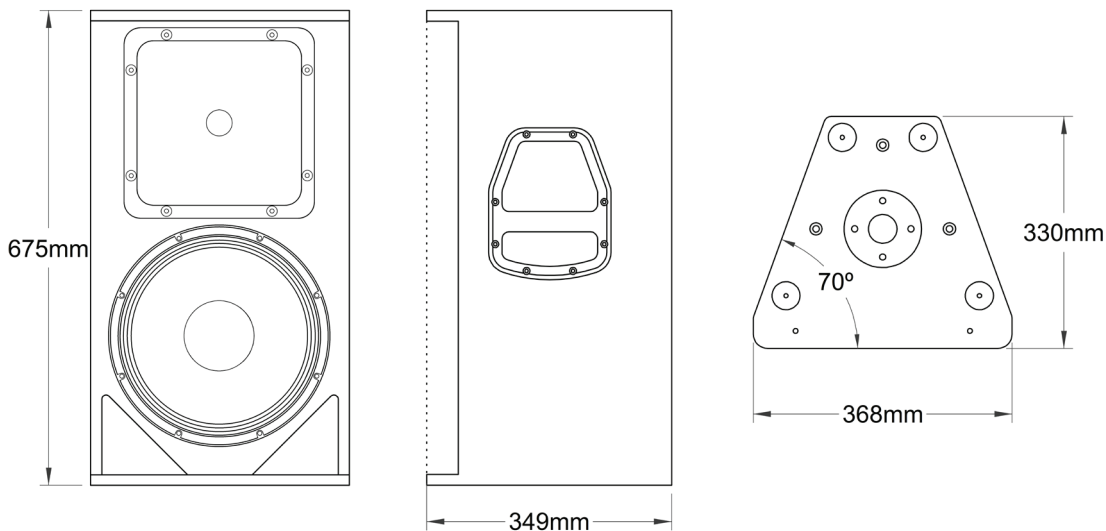
Frequency response:	60 Hz - 19 KHz
Sensitivity (1 W at 1 metre):	101 dB
Admissible power (continuous):	900 W AES
Recommended amplification:	1200 W
Rated impedance:	8 Ω
Maximum SPL:	134 dB peak at 1 metre
Diffuser:	rotatable 90° x 60° or 60° x 40° for horizontal array
Bass components:	1 x 12" neodymium, 700 W AES, 8 Ω
Treble components:	1 x 1.4" neodymium, 80 W AES, 8 Ω

CABINET DIMENSIONS (VERTICAL POSITION)

Front:	368 x 675 mm
Rear:	330 mm
Net weight:	22 kg
Connections:	2 x Neutrik® speakON®



DIMENSIONS



SPOT SERIES • ME8SA MKII

Compact, ultra-high performance active trapezoidal cabinet

- Custom components.
- Powered cabinet with 1 x 8" and 1" driver.
- 90° x 60° rotatable diffuser.
- Superlative weight/power ratio (10.6 kg / 127 dB peak at 1 metre).
- Ideal for portable PA systems (combined with our SUB Series subwoofers) and permanent installations.
- Includes 2 x 400 W Class D amplifiers.
- Full internal digital processing (includes 4 user-selectable presets) and Ethernet connection for programming, control and updates.
- Horizontal rigging through adjustable yoke.
- Vertical rigging based on gravity at one point with microbumper (inclination can be adjusted between 0° and 6°).
- Socket for standard tripod with two mounting positions at 0° and 5°.
- Made with 18-ply Finnish birch wood.
- Finished with a special waterproof polyurea coating resistant to erosion and degradation.
- Robust construction in panels assembled with tongue-and-groove techniques and subsequently glued and pressed.
- Front grid with hexagonal punching and high-resistance epoxy finish.
- Special acoustic foam coating for protection of the loudspeakers against dust and dirt.
- Maga Engineering® limited 5-year warranty.



Armonía-Plus
System Manager





TECHNICAL SPECIFICATIONS

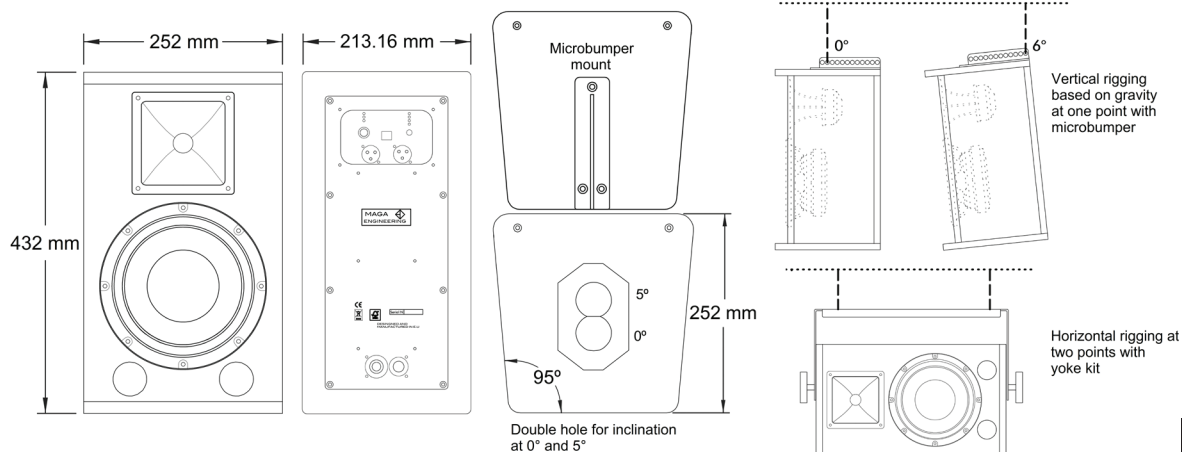
Frequency response:	60 Hz – 19 KHz (+/- 3 dB)
Maximum SPL:	127 dB peak at 1 metre
Includes 4 user-selectable presets:	Preset 1: full-range Preset 2: floor monitor Preset 3: 100 Hz cut for use with subwoofer Preset 4: response for speech purposes
Diffuser:	90° x 60°, rotatable
Amplification:	2 x 400 W Class D amplifiers at 8 Ω each, with full digital processing and control via Ethernet with the ArmoníaPlus® System Manager software. Maximum network consumption 220 W. Admissible voltage from 90 V to 264 V.
Bass components:	1 x 8" neodymium, 350 W AES, 8 Ω
Treble components:	1 x 1" neodymium, 30 W AES, 16 Ω

CABINET DIMENSIONS (VERTICAL POSITION)

Front:	252 x 432 mm
Rear:	252 mm
Net weight:	10.2 kg
Connections:	2 x Neutrik® powerCON® TRUE; 2 x XLR male and female; 1 x RJ45 Ethernet



DIMENSIONS



SPOT SERIES • ME8S

Compact, ultra-high performance passive trapezoidal cabinet

- Custom components.
- Superlative weight/power ratio (11.2 kg / 127 dB peak at 1 metre).
- Passive cabinet with 1 x 8" and 1" driver.
- 90° x 60° rotatable diffuser.
- Passive filter with high phase coherence; crafted with premium electronic components.
- HEPC® (High-End Phase Coherence) filter technology.
- Ideal for portable PA systems (combined with our SUB Series subwoofers) and permanent installations.
- Horizontal rigging through adjustable yoke. Vertical rigging based on gravity at one point with microbumper (inclination can be adjusted between 0° and 6°).
- Socket for standard tripod with two mounting positions at 0° and 5°.
- Made with 18-ply Finnish birch wood.
- Finished with a special waterproof polyurea coating resistant to erosion and degradation.
- Robust construction in panels assembled with tongue-and-groove techniques and subsequently glued and pressed.
- Front grid with hexagonal punching and high-resistance epoxy finish.
- Special acoustic foam coating for protection of the loudspeakers against dust and dirt.
- Maga Engineering® limited 5-year warranty.

HEPC
HIGH-END PHASE COHERENCE





TECHNICAL SPECIFICATIONS

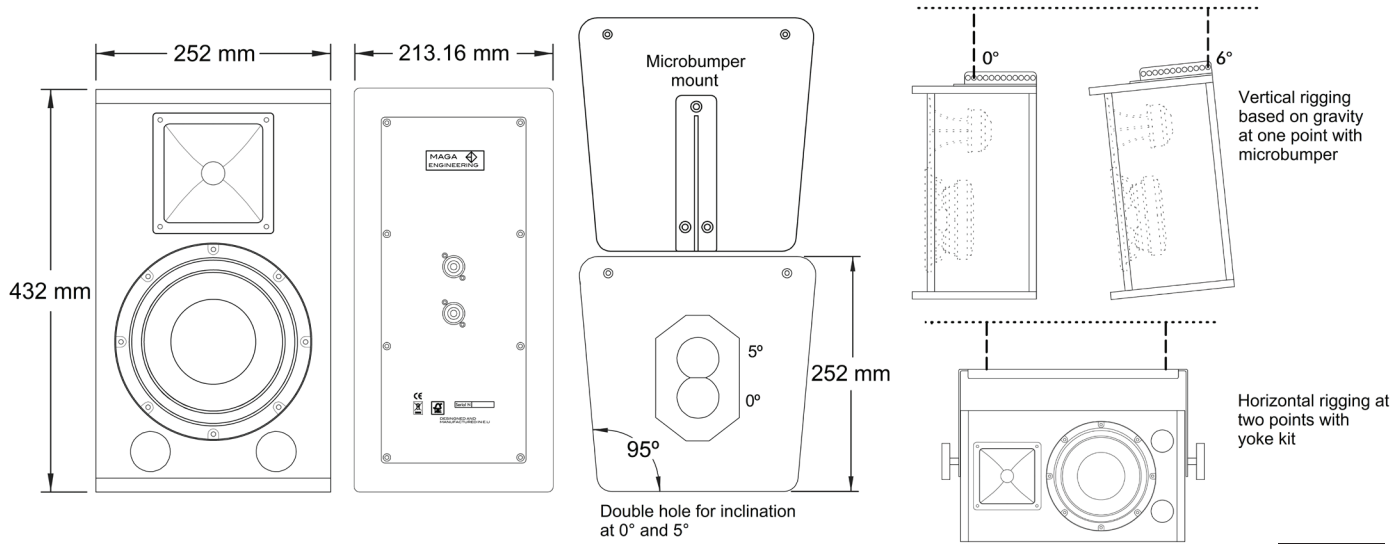
Frequency response:	60 Hz – 19 KHz (+/- 3 dB)
Sensitivity (1 W at 1 metre):	94 dB
Admissible power (continuous):	400 W AES
Recommended amplification:	200 W to 800 W
Rated impedance:	8 Ω
Maximum SPL:	127 dB peak at 1 metre
Diffuser:	90° x 60°, rotatable
Bass components:	1 x 8" ferrite, 350 W AES, 8 Ω
Treble components:	1 x 1" ferrite, 40 W AES, 16 Ω

CABINET DIMENSIONS (VERTICAL POSITION)

Front:	252 x 432 mm
Rear:	252 mm
Net weight:	11.2 kg
Connections:	2 x Neutrik® speakON®



DIMENSIONS



SPOT SERIES • ME12SA

Compact, ultra-high performance active trapezoidal cabinet

- Custom components.
- Powered cabinet with 1 x 12" and 1" driver.
- 90° x 40° rotatable diffuser.
- Superlative weight/power ratio (19.5 kg / 130 dB peak at 1 metre).
- Ideal for portable PA systems (combined with our SUB Series subwoofers) and permanent installations.
- Includes 2 Class D amplifiers (700 W at 4 Ω + 200 W at 16 Ω).
- Full internal digital processing (includes 4 user-selectable presets) and Ethernet connection for updates and programming/control with the ArmoníaPlus® System Manager software.
- 8 rigging points per M8 nut.
- Socket for standard tripod with two mounting positions at 0° and 5°.
- Made with 18-ply Finnish birch wood.
- Finished with a special waterproof polyurea coating resistant to erosion and degradation.
- Robust construction in panels assembled with tongue-and-groove techniques and subsequently glued and pressed.
- Front grid with hexagonal punching and high-resistance epoxy finish.
- Special acoustic foam coating for protection of the loudspeakers against dust and dirt.
- Maga Engineering® limited 5-year warranty.



Armonía-Plus
System Manager





TECHNICAL SPECIFICATIONS

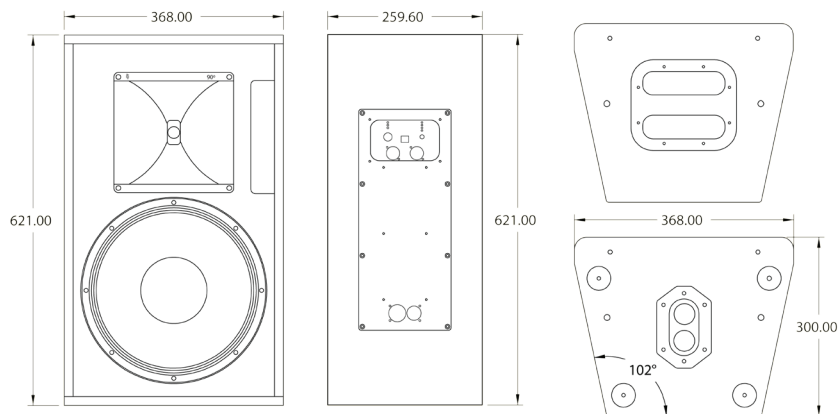
Frequency response:	45 Hz – 19 KHz (+/- 3 dB in preset 4)
Maximum SPL:	130 dB peak at 1 metre
Includes 4 user-selectable presets:	Preset 1: full-range Preset 2: wall mount Preset 3: 100 Hz cut for use with subwoofer Preset 4: flat
Diffuser:	90° x 40°, rotatable
Amplification:	700 W Class D amplifier at 4 Ω (12" speaker) + 200 W at 16 Ω (1" driver) with full digital processing and control via Ethernet with the ArmoníaPlus® System Manager software. Maximum network consumption 220 W. Admissible voltage from 90 V to 264 V..
Bass components:	1 x 12" neodymium, 600 W AES, 4 Ω
Treble components:	1 x 1" ferrite, 40 W AES, 16 Ω

CABINET DIMENSIONS (VERTICAL POSITION)

Front:	368 x 621 mm
Rear:	300 mm
Net weight:	19.5 kg
Connections:	2 x Neutrik® powerCON® TRUE; 2 x XLR male and female; 1 x RJ45 Ethernet



DIMENSIONS



SPOT SERIES • ME12S

Compact, ultra-high performance passive trapezoidal cabinet

- Custom components.
- Superlative weight/power ratio (19 kg / 128 dB peak at 1 metre).
- Passive cabinet with 1 x 12" and 1" driver.
- 90° x 40° rotatable diffuser.
- Passive filter with high phase coherence; crafted with premium electronic components.
- HEPC® (High-End Phase Coherence) filter technology.
- Ideal for portable PA systems (combined with our SUB Series subwoofers) and permanent installations.
- 8 rigging points per M8 nut.
- Socket for standard tripod with two mounting positions at 0° and 5°.
- Made with 18-ply Finnish birch wood.
- Finished with a special waterproof polyurea coating resistant to erosion and degradation.
- Robust construction in panels assembled with tongue-and-groove techniques and subsequently glued and pressed.
- Front grid with hexagonal punching and high-resistance epoxy finish.
- Special acoustic foam coating for protection of the loudspeakers against dust and dirt.
- Maga Engineering® limited 5-year warranty.





TECHNICAL SPECIFICATIONS

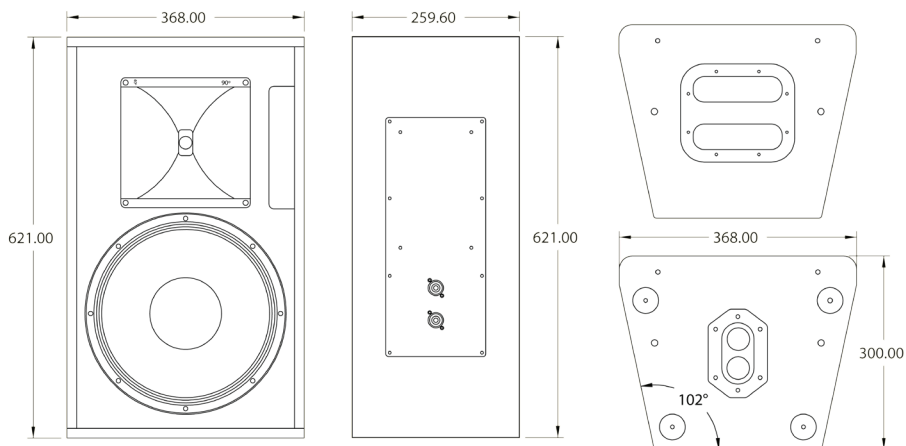
Frequency response:	45 Hz – 19 KHz (+/- 3 dB)
Sensitivity (1 W at 1 metre):	97 dB
Admissible power (continuous):	600 W AES
Recommended amplification:	500 W to 1000 W
Rated impedance:	8 Ω
Maximum SPL:	128 dB peak at 1 metre
Diffuser:	90° x 40°, rotatable
Bass components:	1 x 12" ferrite, 500 W AES, 8 Ω
Treble components:	1" ferrite, 40 W AES, 8 Ω

CABINET DIMENSIONS (VERTICAL POSITION)

Front:	368 x 621 mm
Rear:	300 mm
Net weight:	19 kg
Connections:	2 x Neutrik® speakON®



DIMENSIONS



BROADCAST SERIES • ME10BA

High-SPL active monitor for mixing and audiovisual post-production studios

- Custom components.
- Powered monitor with 1 x 10" and 1" driver.
- High SPL output (125 dB peak at 1 meter).
- Specifically designed for mixing and audiovisual post-production studios.
- Includes 2 x 250 W Class D amplifiers with analog connections (XLR, RCA), digital connections (AES/EBU, coaxial S/PDIF, optical S/PDIF) and USB 2.0 interface for configuration.
- Optional DANTE® connection.
- Full internal digital processing (includes 3 user-selectable presets).
- 16 rigging points per M8 nut for installation in any vertical or horizontal position.
- Made with 18-ply Finnish birch wood.
- Finished with a special waterproof polyurea coating.
- resistant to erosion and degradation.
- Robust construction in panels assembled with tongue-and-groove techniques and subsequently glued and pressed.
- Maga Engineering® limited 5-year warranty.





TECHNICAL SPECIFICATIONS

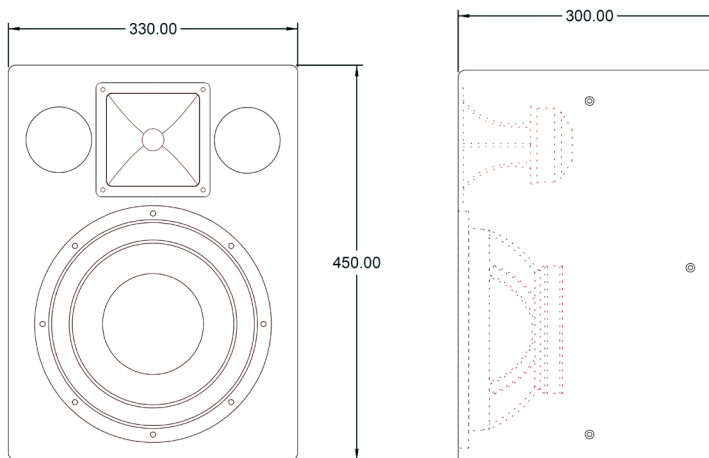
Frequency response:	45 Hz – 22 KHz (+/- 1 dB)
Rated input sensitivity:	+4 dBu
Maximum SPL:	125 dB peak at 1 metre
Includes 3 user-selectable presets:	Preset 1: flat Preset 2: treble -2 dB Preset 3: X-curve
Diffuser:	90° x 60°, rotatable
Amplification:	2 x 250 Wrms Class D amplifiers at 4 Ω each; bi-amplified with full digital processing
Bass components:	1 x 10" ferrite, 250 W AES, 4 Ω
Treble components:	1 x 1" neodymium, 30 W AES, 8 Ω

CABINET DIMENSIONS (VERTICAL POSITION)

Front:	330 x 450 mm
Rear:	300 mm
Net weight:	18 kg
Connections:	analog (2 x XLR male/female, RCA); digital (AES, coaxial S/PDIF, optical S/PDIF); USB 2.0 interface for configuration; optional DANTE® connection



DIMENSIONS





AMPLIFICATION

At **Maga Engineering** we use our own amplification. Our new **ME 5K** (5000 W), **ME 10K** (10 000 W) and **ME 20K** (20 000 W) are 4-channel amplifiers with state-of-the-art technologies that integrate silicon carbide (SiC) transistors, universal power supply and a potent DSP processor with high-performance AD/DA converters at 96 KHz/24 bits. These units have been specifically designed to amplify our **ME10V** and **ME20V** line-array cabinets and the **Maga Mini** systems. They offer exceptional performance, reliability and sound quality with unbeatable value for money, and are covered by a **2-year limited warranty** programme.

As alternative options to our amplifiers, we recommend a range of products developed by Lab.gruppen® and Powersoft®.

All these amplifiers are based on cutting-edge, industry-standard technologies that have been

consistently time-proven in terms of quality, reliability and performance. They also provide DSP functions with a comprehensive management system, and offer Ethernet, AES/EBU and Dante® connectivity.

In order to minimise the risk of connection errors and make it easier for the user to handle and install our systems, all amplifiers are distributed in their own flight-case properly machined and labelled, and come with a fully wired connection panel. Moreover, all DSP processors built into the amplifiers are programmed with factory presets specifically designed for the system configuration chosen by the user.

LINE-ARRAY SYSTEMS – Recommended amplifiers

Our line-array systems are delivered to the client as a turnkey project. To maximise their performance, we recommend using the **Maga Engineering®** amplifiers **ME 10K** (for ME10V, ME10V Wide and ME20V line-array cabinets) and **ME 20K** (for ME218LEX subwoofers).

As an alternative to our own amplifiers, we suggest units from the Lab.gruppen® PLM Series™ (PLM 12K44 and PLM 20K44 models) or the Powersoft® X Series™ (X8, X4L and X4 models). For more information on features and specifications, please visit www.labgruppen.com and www.powersoft.com.

MAGA MINI Systems – Recommended amplifiers

Our Maga Mini systems can be either powered or passive. In the powered Maga Mini systems, the acoustic cabinets include amplification modules developed by Powersoft® and RAM Audio®. These advanced solutions include high-performance DSP processors programmed with factory presets specially tailored for the corresponding Maga Mini system configuration.

For passive Maga Mini systems, we recommend our Maga Engineering® **ME 5K** and **ME 10K** amplifiers.

Alternatively to our own amplification, we suggest using Powersoft® T Series™ units. For more details about models and specifications, please visit www.powersoft.com.

SIMULATION, ACOUSTIC PREDICTION AND RIGGING SOFTWARE

Our line-array systems are supported by **EASE Focus® version 3**, the industry-standard 3D modelling software for simulation, acoustic prediction and rigging.

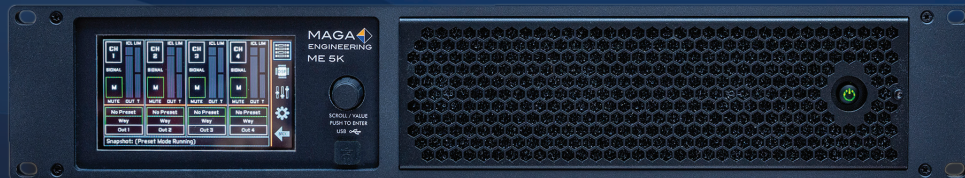
Below you can see the technical specifications of our **ME 5K**, **ME 10K** and **ME 20K** amplifiers.



AMPLIFICATION

MAGA ENGINEERING® ME 5K

- 5000 W amplifier with 4 output channels.
- 4 x 1250 W (2 Ω / 4 Ω / 8 Ω / Hi-Z 70 V / Hi-Z 100 V), 2 x 2500 W (4 Ω bridged / 8 Ω bridged).
- Maximum output tension: 150 V peak.
- Maximum output current: 36 A peak.
- High-performance, light weight Class D output stage. Integrates state-of-the-art silicon carbide (SiC) transistors allowing to work at very high tension levels with incredible dynamics, outstanding sonic punch and exceptional reliability.
- Upside-down design prevents accumulation of dust on electronic components.
- Powerful double-precision 64-bit DSP (4 inputs/4 outputs) at 96 KHz, with high-performance AD/DA converters at 96 KHz/24 bits. Minimum process latency: 0.85 ms. Tailored FIR processes up to 1000 taps.
- Dante™ Networking (compatible with AES67 and DDM) and AES3 digital inputs; optional.
- 2 x Ethernet ports and USB 2.0 port for DSP control, daisy-chain connection and firmware update.
- Extra-large 4.3" IPS display with user interface via capacitive touch panel.
- Universal power supply with PFC.
- PCM™ (Power Control Management) system for DSP-enabled distribution of the amplifier total power over channels according to the needs.
- Protection systems in both the power supply and the audio modules (Soft-start, Turn-on Turn-off transients, Muting at turn-on, Overheating, DC, RF, Short-circuit, Open or mismatched loads, Overloaded power supply, ICL™ and PCM™). These systems work continuously in real time and with the highest reliability to keep all amplifier parameters always within safe working thresholds.
- Fast and powerful cooling system with front-to-back ventilation.
- Neutrik® XLR and speakON® input and output connections.
- Neutrik® powerCON® network connection.
- 2-year warranty program.
- Designed and developed in Spain.



Dante®
AES67



TECHNICAL SPECIFICATIONS

General

Number of amplification channels: 4
Total power (all channels load): 5000 W

Maximum output power

8 Ω / 4 Ω / 2.67 Ω / 2 Ω : 4 x 1250 W
8 Ω bridged / 4 Ω bridged: 2 x 2500 W
Hi-Z 70 V / Hi-Z 100 V: 4 x 1250 W

Amplifier output module

Maximum output tension: 150 V peak
Maximum output current: 36 A peak

Audio

Gain: 26 dB – 44 dB (in 1 dB steps)
Total harmonic distortion: < 0.05 %
Signal to noise ratio (SNR): 111 dBA
Channel separation (crosstalk 20 Hz – 1 KHz): > 70 dB

Front panel – Interface

DSP control and firmware update: 1 x USB 2.0 Type B

Rear panel – Interface

2-channel analog I/O (input + link): 4 x Neutrik® 3-pin XLR, electronically balanced
AES / EBU / I/O (input+ link): 2 x Neutrik® 3-pin XLR
Output connections: 4 x Neutrik® speakON®
Ethernet control ports (daisy-chain): 2 x RJ45 Neutrik® etherCON®
Dante™ Networking* digital inputs
(compatible with AES67 and DDM): 2 x RJ45 Neutrik® etherCON®

Mains power and consumption

Rated tension: 100 V – 240 V AC, 50 Hz – 60 Hz
Operational tension: 90 V – 265 V AC
1/8 Rated power (@230 V, 4 Ω): 3.7 A – 817 W
1/8 Rated power (@120 V, 4 Ω): 7.2 A – 817 W

Dimensions and weight

Width: 483 mm
Height: 89 mm
Depth: 355 mm
Weight: 7 kg

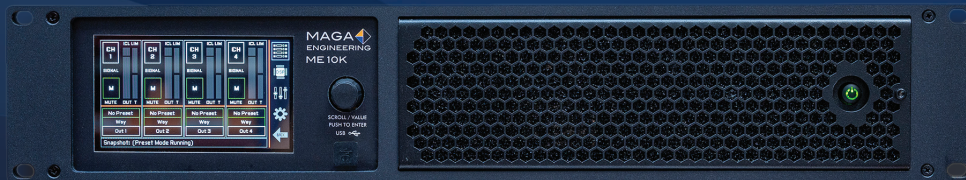
*: The Dante™ connection is optional.

More information at www.magaengineering.com

AMPLIFICATION

MAGA ENGINEERING® ME 10K

- 10 000 W amplifier with 4 output channels.
- 4 x 2500 W ($2 \Omega / 4 \Omega$), 4 x 1250 W (8Ω), 4 x 2500 W (Hi-Z 70 V / Hi-Z 100 V), 2 x 5000 W (4Ω bridged / 8Ω bridged).
- Maximum output tension: 150 V peak.
- Maximum output current: 50 A peak.
- High-performance, light weight Class D output stage. Integrates state-of-the-art silicon carbide (SiC) transistors allowing to work at very high tension levels with incredible dynamics, outstanding sonic punch and exceptional reliability.
- Upside-down design prevents accumulation of dust on electronic components.
- Powerful double-precision 64-bit DSP (4 inputs/4 outputs) at 96 KHz, with high-performance AD/DA converters at 96 KHz/24 bits. Minimum process latency: 0.85 ms. Tailored FIR processes up to 1000 taps.
- Dante™ Networking (compatible with AES67 and DDM) and AES3 digital inputs; optional.
- 2 x Ethernet ports and USB 2.0 port for DSP control, daisy-chain connection and firmware update.
- Extra-large 4.3" IPS display with user interface via capacitive touch panel.
- Universal power supply with PFC.
- PCMTM (Power Control Management) system for DSP-enabled distribution of the amplifier total power over channels according to the needs.
- Protection systems in both the power supply and the audio modules (Soft-start, Turn-on Turn-off transients, Muting at turn-on, Overheating, DC, RF, Short-circuit, Open or mismatched loads, Overloaded power supply, ICL™ and PCMTM). These systems work continuously in real time and with the highest reliability to keep all amplifier parameters always within safe working thresholds.
- Fast and powerful cooling system with front-to-back ventilation.
- Neutrik® XLR and speakON® input and output connections.
- Neutrik® powerCON® network connection.
- 2-year warranty program.
- Designed and developed in Spain.



Dante®
AES67



TECHNICAL SPECIFICATIONS

General

Number of amplification channels: 4
Total power (all channels load): 10 000 W

Maximum output power

8 Ω : 4 x 1250 W
4 Ω / 2.67 Ω / 2 Ω : 4 x 2500 W
8 Ω bridged / 4 Ω bridged: 2 x 5000 W
Hi-Z 70 V / Hi-Z 100 V: 4 x 2500 W

Amplifier output module

Maximum output tension: 150 V peak
Maximum output current: 50 A peak

Audio

Gain: 26 dB – 44 dB (in 1 dB steps)
Total harmonic distortion: < 0.05 %
Signal to noise ratio (SNR): 111 dBA
Channel separation (crosstalk 20 Hz – 1 KHz): > 70 dB

Front panel – Interface

DSP control and firmware update: 1 x USB 2.0 Type B

Rear panel – Interface

2-channel analog I/O (input + link): 4 x Neutrik® 3-pin XLR, electronically balanced
AES / EBU / I/O (input+ link): 2 x Neutrik® 3-pin XLR
Output connections: 4 x Neutrik® speakON®
Ethernet control ports (daisy-chain): 2 x RJ45 Neutrik® etherCON®
Dante™ Networking* digital inputs
(compatible with AES67 and DDM): 2 x RJ45 Neutrik® etherCON®

Mains power and consumption

Rated tension: 100 V – 240 V AC, 50 Hz – 60 Hz
Operational tension: 90 V – 265 V AC
1/8 Rated power (@230 V, 4 Ω): 7.3 A – 1634 W
1/8 Rated power (@120 V, 4 Ω): 14 A – 1634 W

Dimensions and weight

Width: 483 mm
Height: 89 mm
Depth: 355 mm
Weight: 7 kg

*: The Dante™ connection is optional.

More information at www.magaengineering.com

AMPLIFICATION

MAGA ENGINEERING® ME 20K

- 20 000 W amplifier with 4 output channels.
 - 4 x 5000 W ($2 \Omega / 4 \Omega$), 4 x 2500 W (8Ω), 4 x 3500 W (Hi-Z 70 V), 4 x 5000 W (Hi-Z 100 V), 2 x 10 000 W (4Ω bridged / 8Ω bridged).
 - Maximum output tension: 235 V peak.
 - Maximum output current: 71 A peak.
 - High-performance, light weight Class D output stage. Integrates state-of-the-art silicon carbide (SiC) transistors allowing to work at very high tension levels with incredible dynamics, outstanding sonic punch and exceptional reliability.
 - Upside-down design prevents accumulation of dust on electronic components.
 - Powerful double-precision 64-bit DSP (4 inputs/4 outputs) at 96 KHz, with high-performance AD/DA converters at 96 KHz/24 bits. Minimum process latency: 0.85 ms. Tailored FIR processes up to 1000 taps.
 - Dante™ Networking (compatible with AES67 and DDM) and AES3 digital inputs; optional.
 - 2 x Ethernet ports and USB 2.0 port for DSP control,
- daisy-chain connection and firmware update.
 - Extra-large 4.3" IPS display with user interface via capacitive touch panel.
 - Universal power supply with PFC.
 - PCM™ (Power Control Management) system for DSP-enabled distribution of the amplifier total power over channels according to the needs.
 - Protection systems in both the power supply and the audio modules (Soft-start, Turn-on Turn-off transients, Muting at turn-on, Overheating, DC, RF, Short-circuit, Open or mismatched loads, Overloaded power supply, ICL™ and PCM™). These systems work continuously in real time and with the highest reliability to keep all amplifier parameters always within safe working thresholds.
 - Fast and powerful cooling system with front-to-back ventilation.
 - Neutrik® XLR and speakON® input and output connections.
 - Neutrik® powerCON® network connection (32 A version).
 - 2-year warranty program.
 - Designed and developed in Spain.



Dante®
AES67



TECHNICAL SPECIFICATIONS

General

Number of amplification channels: 4
Total power (all channels load): 20 000 W

Maximum output power

8 Ω : 4 x 2500 W
4 Ω / 2.67 Ω / 2 Ω : 4 x 5000 W
8 Ω bridged / 4 Ω bridged: 2 x 10 000 W
Hi-Z 70 V: 4 x 3500 W
Hi-Z 100 V: 4 x 5000 W

Amplifier output module

Maximum output tension: 235 V peak
Maximum output current: 71 A peak

Audio

Gain: 26 dB – 44 dB (in 1 dB steps)
Total harmonic distortion: < 0.05 %
Signal to noise ratio (SNR): 115 dBA
Channel separation (crosstalk 20 Hz – 1 KHz): > 70 dB

Front panel – Interface

DSP control and firmware update: 1 x USB 2.0 Type B

Rear panel – Interface

2-channel analog I/O (input + link): 4 x Neutrik® 3-pin XLR, electronically balanced
AES / EBU / I/O (input+ link): 2 x Neutrik® 3-pin XLR
Output connections: 4 x Neutrik® speakON®
Ethernet control ports (daisy-chain): 2 x RJ45 Neutrik® etherCON®
Dante™ Networking* digital inputs
(compatible with AES67 and DDM): 2 x RJ45 Neutrik® etherCON®

Mains power and consumption

Rated tension: 100 V – 240 V AC, 50 Hz – 60 Hz
Operational tension: 90 V – 265 V AC
1/8 Rated power (@230 V, 4 Ω): 14 A – 3268 W
1/8 Rated power (@120 V, 4 Ω): 26.8 A – 3268 W

Dimensions and weight

Width: 483 mm
Height: 89 mm
Depth: 355 mm
Weight: 9 kg

*: The Dante™ connection is optional.

More information at www.magaengineering.com

NOTES



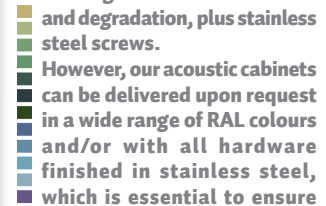
The ME10V, ME10V Wide, ME20V, ME46V MKII, ME12WX, ME15WX, ME12Z, ME8S and ME12S passive systems feature the HEPC® (High-End Phase Coherence) filtering technology, which guarantees perfect audio summing and powerful, clear and extremely intelligible coverage. The ME10V model ensures high-performance specifications at distances of up to 70 metres*, quite a remarkable achievement for such a compact and lightweight line-array system (24 kg per element).

(*) For line-array systems of eight (8) or more elements. This feature is truly unique considering the extremely small dimensions and light weight of each ME10V line-array element developed by Maga Engineering. In general, the selected configuration should be adapted in size to the requirements of every event in accordance with the characteristics of the venue and the audience. Maga Engineering is not responsible for pressure and/or intelligibility loss caused by cross-wind or any other external factors.



FINISH

As a standard, our products are finished in black colour with a special waterproof polyurea coating resistant to erosion and degradation, plus stainless steel screws.



However, our acoustic cabinets can be delivered upon request in a wide range of RAL colours and/or with all hardware finished in stainless steel, which is essential to ensure durability in settings and environments with very high salinity (beach clubs, cruise ships, etcetera).

These special finishes come with a surcharge which varies depending on the number of requested units.

Lab.gruppen® is a registered trademark of Lab.gruppen AB. PLM™ (Powered Loudspeaker Management) is a trademark of Lab.gruppen AB.

Powersoft® is a registered trademark of Powersoft S.p.A.

NOTES

State of the Art Sound Systems

 **MADE AND
DESIGNED
IN SPAIN**

MAGA ENGINEERING
Carretera de Pedro Muñoz, 28
16630 Mota del Cuervo, Cuenca - ESPAÑA
CIF B-16249757

 +34 609 045 722
 +34 967 180 668
 sales@magaengineering.com
 <https://magaengineering.com>
 www.facebook.com/MagaEngineering
 www.instagram.com/maga.engineering